



CHANGING LIVES WITH SMART LIVING TECHNOLOGIES

.....

Cognitively Accessible Technologies Used Directly by Individuals at Home, School, Work and in the Community for Smart Living



WayFinder App

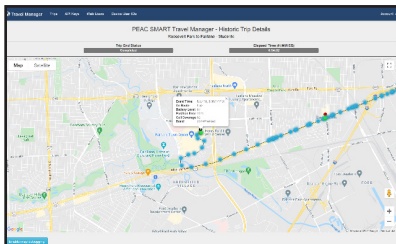
.....

WayFinder uses customized GPS data to provide pictures and descriptions of landmarks or other key locations along the route, prompting the user when it's time to proceed to the next step - seamlessly transitioning even to a different mode of transportation. The individual simply chooses which route to take, and WayFinder safely guides them to their destination.

WayFinder Ecosystem

.....

The WayFinder Ecosystem provides a wide range of services and tools designed to enable safe travel within the community, including travel-readiness assessments and trainings, apps that provide accessible pre-trip checklists and alerts, route-building and virtualization, and real-time monitoring services.



www.ablelinktech.com



719.592.0347



@AbleLinkTech