

New Mexico Department of Health Influenza & Respiratory Disease Report

A Summary of Influenza and RSV Surveillance

New Mexico Influenza Geographic Spread*

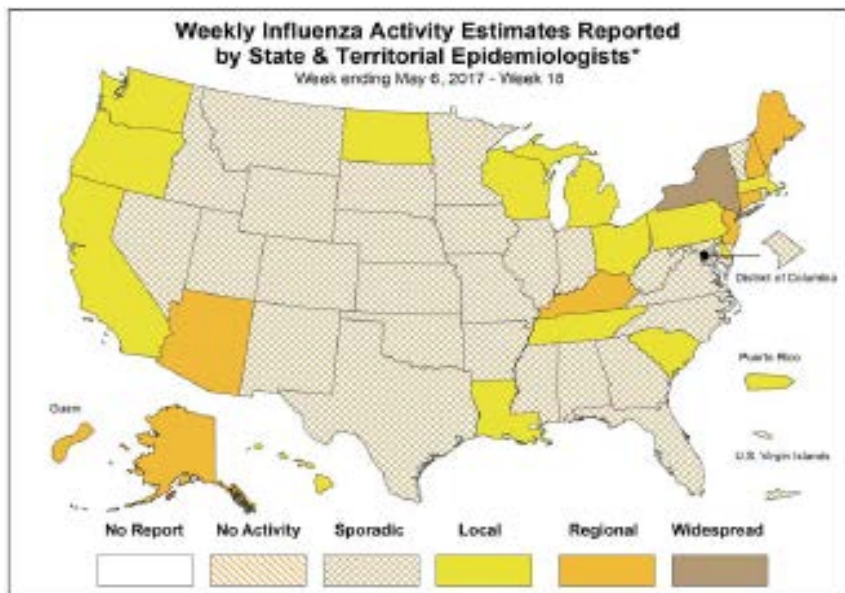
No Activity

Sporadic

Local

Regional

Widespread



* This map indicates geographic spread & does not measure the severity of influenza activity

Summary of Activity: Week 18 April 30th – May 6th, 2017

- New Mexico ILI activity is currently 1.7% which is below the national baseline
- US ILI is 1.6% which is below the national baseline of 2.2%
- Influenza activity is below the NM baseline of 2.6% in 4 of 5 health regions
- There was PCR confirmed lab activity in four of five health regions this week
- No new influenza-related outbreaks have been reported this week

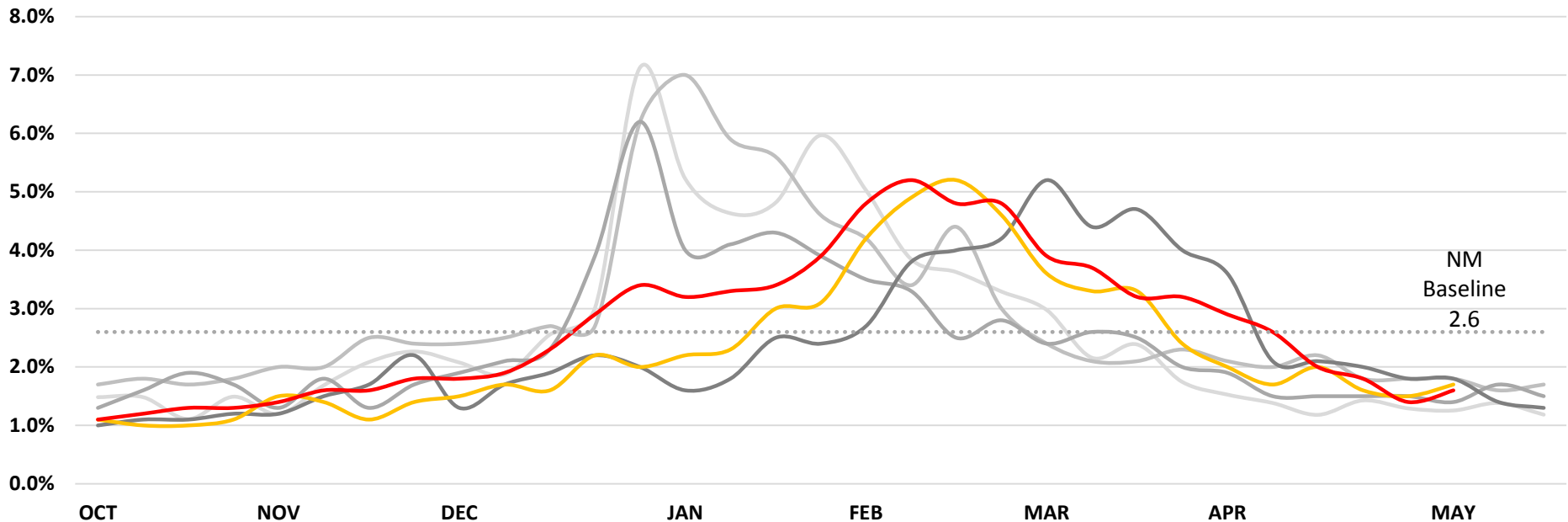
Table of Contents

- Influenza-Like Illness (ILI) 2
- Regional ILI 3
- Laboratory Data 4-5
- Hospitalization and Death Data 6
- Prevention and Control 7
- Appendix & Resources 8

Influenza-Like Illness (ILI) Activity

New Mexico Department of Health (NMDOH) is collaborating with 29* ILI sentinel sites for the 2016-2017 season. Sites report weekly on the number of patients that present to their facility with influenza-like illness. That number is then divided by the total number of patients seen for any reason, resulting in percent of ILI activity. ILI is defined as fever of > 100° F and cough and sore throat in absence of known cause.

New Mexico ILI Activity, 2012 to Present



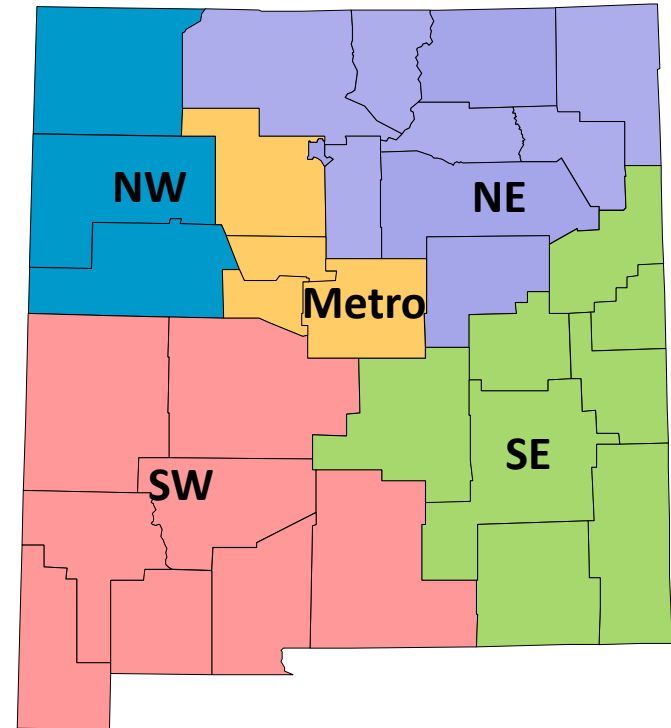
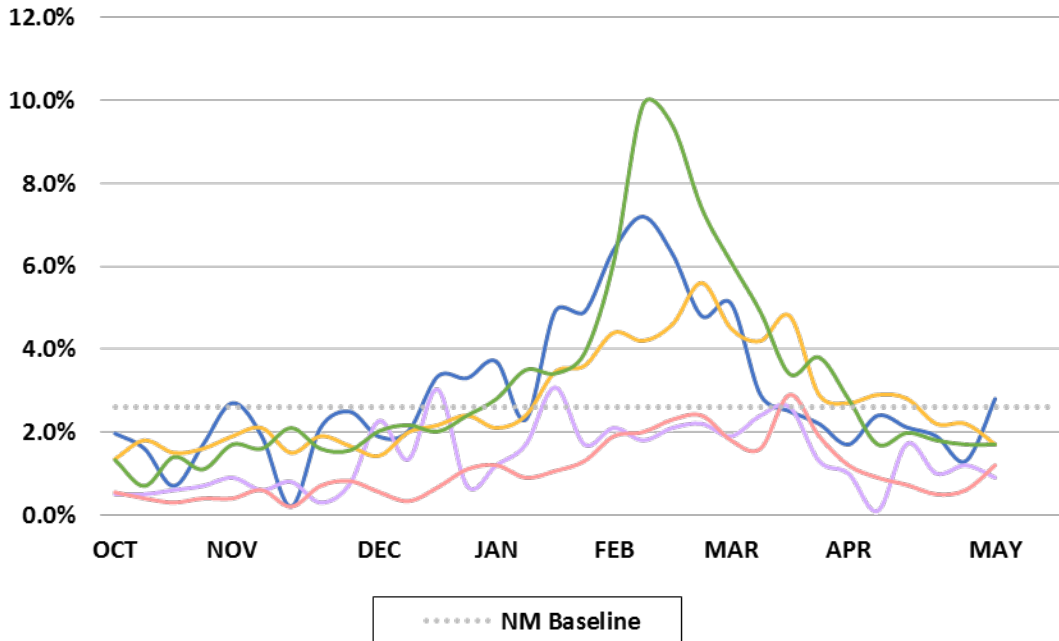
— 2012-13 NM — 2013-14 NM — 2014-15 NM — 2015-16 NM — 2016-2017 NM — 2016-2017 US NM Baseline 2016-2017

% ILI, NM Week 18 Apr 30th – May 6th, 2017 (current Week)	% ILI, NM Week 17 Apr 23rd – Apr 29th, 2017 (previous week)	% ILI, US Week 18 Apr 30th – May 6th, 2017 (current week)
1.7%	1.5%	1.6%

* See appendix for 29 reporting sites

Regional ILI Activity

NM ILI Activity by Health Region



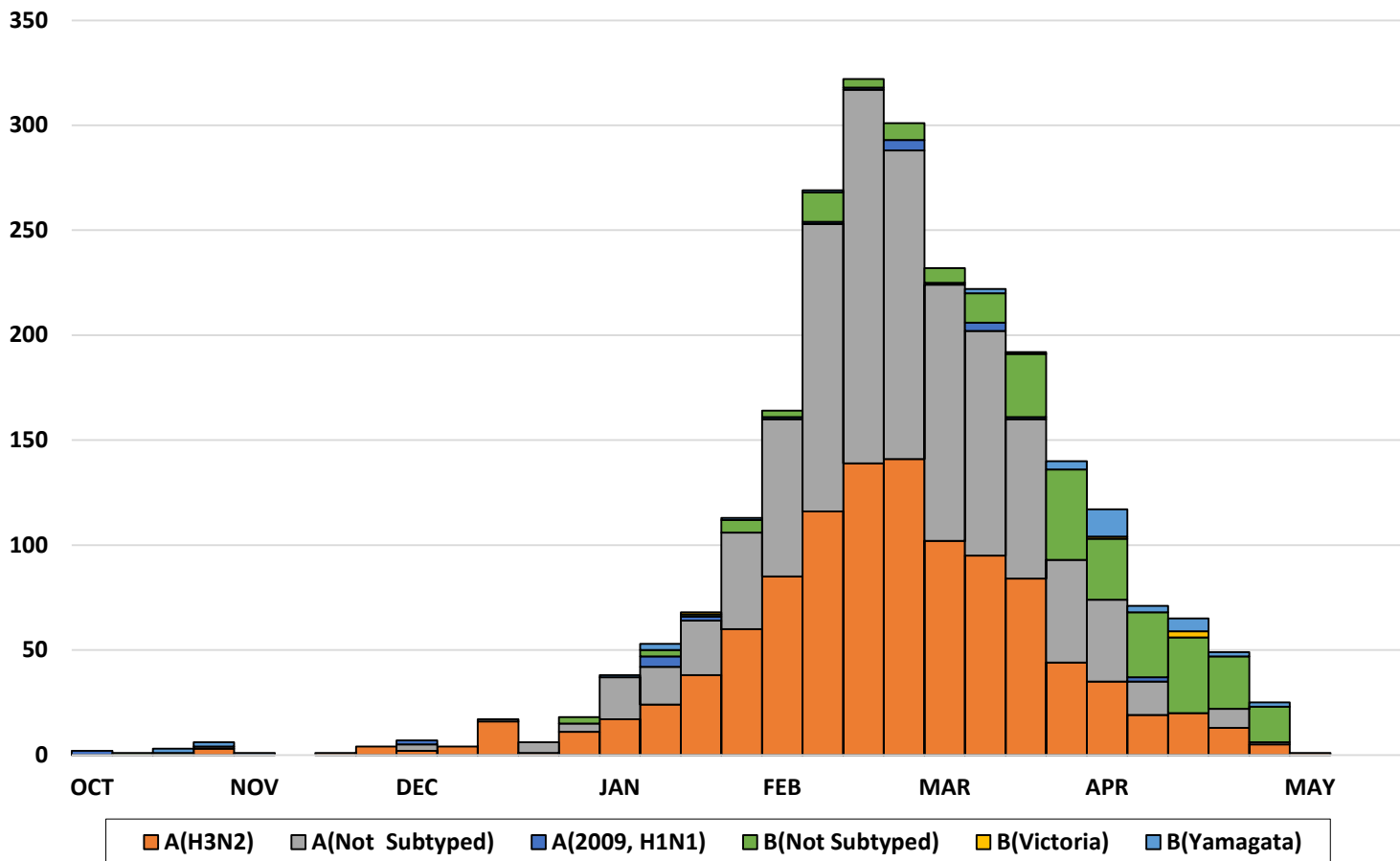
Region	This Week	Last Week	Outbreaks	+PCR testing at SLD
NW	2.8%	1.3%	No	No
NE	0.9%	1.2%	No	Yes
Metro	1.7%	2.2%	No	Yes
SW	1.2%	0.6%	No	Yes
SE	1.7%	1.7%	No	Yes

Outbreak: An influenza outbreak is defined as at least two cases of ILI in a specific area with at least one lab confirmed case.

PCR Testing: Polymerase Chain Reaction (PCR) tests can identify the presence of influenza viral RNA in respiratory specimens. PCR testing is performed at various laboratories across New Mexico.

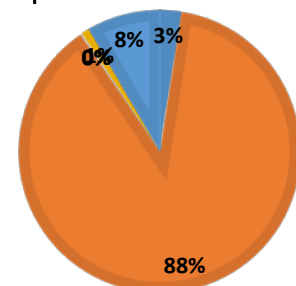
Laboratory Data & Virologic Surveillance

PCR Among Hospital/Clinic Sites & Scientific Laboratory Division, 2016-2017

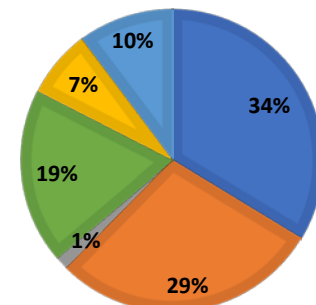


Since the start of the 2016-2017 influenza season, laboratories have reported that a total of 2,519 out of 15,091 respiratory specimens have tested positive for influenza by PCR. Twenty-seven positive specimens were subtyped as A(H1N1), 1,080 were A(H3N2), 1,080 influenza A specimen was not subtyped. Two hundred seventy- six tested positive as influenza B not subtyped, 5 positive specimens were identified as B(Victoria) and 44 as B(Yamagata).

NM subtyping performed at SLD

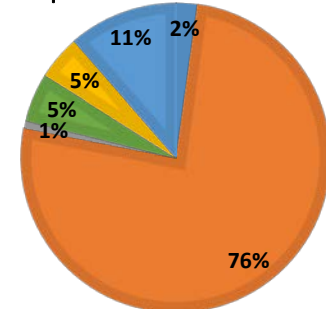


2016-2017 NM



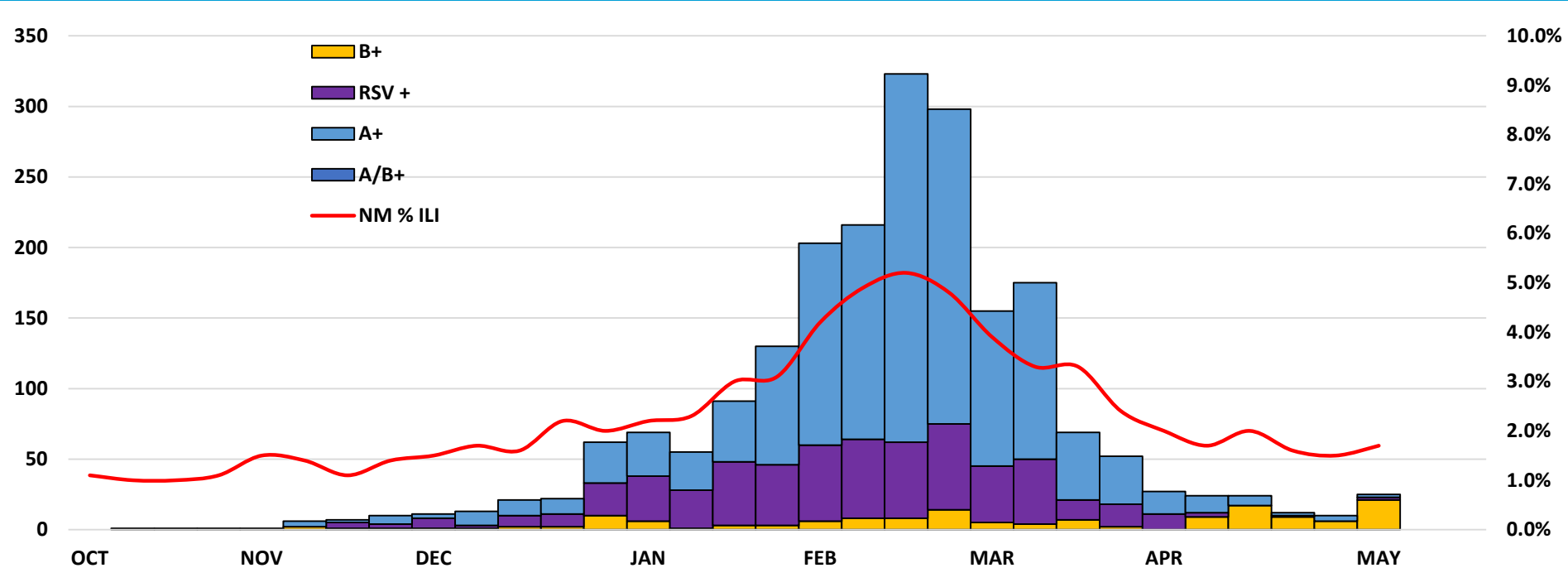
2015-2016 NM

U.S. virus characterization performed at CDC



2016-2017 US ⁴

RSV and Rapid Influenza Laboratory Data 2016-2017



Laboratory Sites Participating in Rapid influenza Data Collection (Facility name, City)

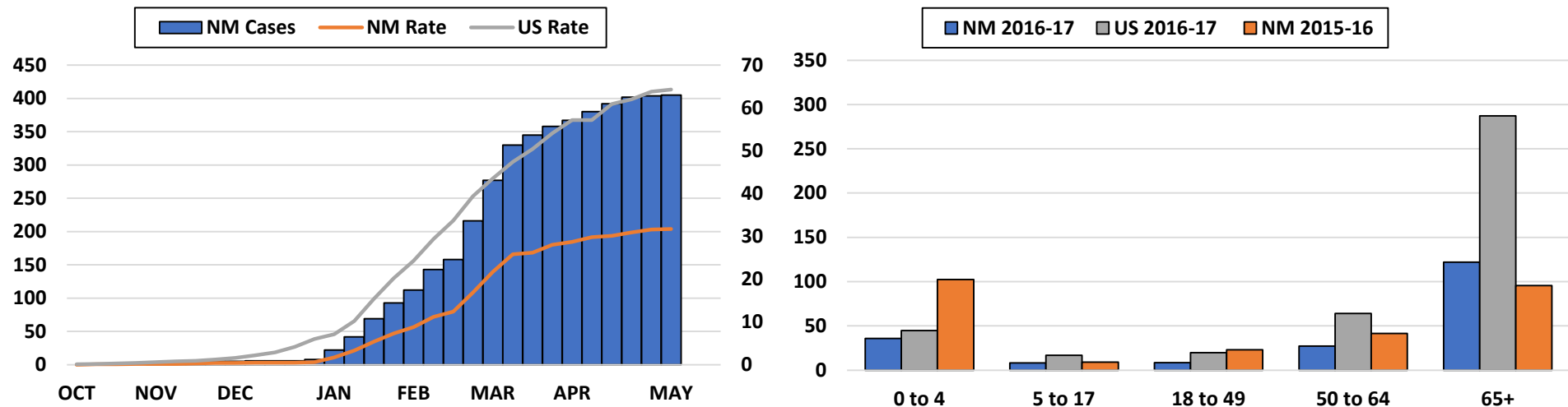
NW	San Juan Regional Medical Center, Farmington; and Acoma-Canoncito-Laguna Indian Health Hospital, Acoma Pueblo
NE	Taos-Picuris Indian Health Clinic, Taos; Pecos Valley Medical Center, Pecos; La Familia Medical Clinics, Santa Fe; Los Alamos Family Care Clinic, Los Alamos; Jicarilla Apache Indian Health Clinic, Dulce; Children's Clinic PA, Los Alamos
Metro	Lovelace Downtown Medical Center, Albuquerque; University of New Mexico Student Health Clinic, Albuquerque; Presbyterian Medical Group-Atrisco, Northside, Pediatric Urgent Care; Albuquerque Health Partners Urgent Care, Rio Rancho
SW	Gila Regional Medical Center, Silver City; Hidalgo Medical Services Clinic, Lordsburg; Ben Archer Health Center, Deming, Columbus, and Dona Ana; La Clinica de Familia, Sunland Park; Mescalero Apache Indian Health Hospital, Mescalero; New Mexico Mining and Technology Institute, Socorro
SE	Carlsbad Medical Center, Carlsbad; Lea Regional Medical Center, Hobbs; Eastern New Mexico Medical Center, Roswell; Roosevelt General Hospital Clinic, Portales

Laboratory Sites Participating in RSV Data Collection (Facility name, City)

	San Juan Regional Medical Center, Farmington and Acoma-Canoncito-Laguna Indian Health Hospital, Acoma, Gallup Indian Medical Center, Gallup; Zuni Hospital, Zuni; Crownpoint IHS, Gallup;
	Los Alamos Medical Center, Los Alamos, Dulce Health Center, Dulce; Christus St. Vincent. Santa Fe; Alta Vista Regional Hospital, Las Vegas; Miners' Colfax Medical Center, Raton
	Quest Diagnostic Laboratory, Albuquerque
	Gerald Champion, Alamogordo
	Artesia General Hospital, Artesia; Carlsbad Medical Center, Carlsbad; Lea Regional Medical Center, Hobbs; Eastern New Mexico Medical Center, Roswell

* Data is not representative of all facilities in New Mexico

Influenza Hospitalizations, NM & US, 2016-2017



Influenza and Pneumonia Deaths, NM, 2014-2017

Season	Year to date (YTD) P & I Deaths	Pneumonia Deaths	Adult Flu Deaths	Pediatric Flu Deaths	Total P & I Deaths
2016-2017	95	68	27	0	95*
2015-2016	190	159	30	1	190
2014-2015	185	152	32	1	185

Pneumonia death: Is defined as have a cause of death that related to pneumonia & influenza (P & I) not including: aspiration pneumonia, pneumonitis, or pneumococcal meningitis.

Influenza death: Is defined as have a cause of death that related to pneumonia & influenza (P & I) not including: parainfluenzae or Haemophilus *influenzae*.

*There are significant reporting delays and counts represent cases reported to date by the NMDOH BVRHS or OMI

Vaccination Information

Still Need to Get Your Flu Shot?

HealthMap Vaccine Finder:

<http://vaccine.healthmap.org/>

To use HealthMap Vaccine Finder you'll need internet access and the zip code in which you wish to get vaccinated.

Or

Contact your local public health office:

<https://nmhealth.org/location/public/>

Antiviral Information and Data

Persons at higher risk for influenza complication recommended for antiviral treatment include:

- Children aged younger than 2 years & adults aged 65 years and older
- Persons with chronic medical conditions
- Persons with immunosuppression, including that caused by medications or by HIV infection
- Women who are pregnant or postpartum (within 2 weeks after delivery)
- Persons aged younger than 19 years who are receiving long-term aspirin therapy
- American Indians/Alaska Natives
- Persons who are morbidly obese (i.e., BMI is 40 or greater)
- Residents of nursing homes and other chronic-care facilities

Appendix

*Geographic spread is based on CDCs activity estimates definitions. For more information visit: <http://www.cdc.gov/flu/weekly/overview.htm>

Health Region	Participating Sentinel Sites (Facility name, City)
Northwest	San Juan Regional Medical Center, Farmington and Acoma-Canoncito-Laguna Indian Health Hospital, Acoma
Northeast	Raton Family Practice Associates, Raton; Taos-Picuris Indian Health Clinic, Taos; Pecos Valley Medical Center, Pecos; La Familia Medical Clinics, Santa Fe; Los Alamos Family Care Clinic, Los Alamos; Jicarilla Apache Indian Health Clinic, Dulce; Children's Clinic PA, Los Alamos; Miner's Colfax Medical Center, Raton
Metro	Lovelace Downtown Medical Center, Albuquerque; University of New Mexico Student Health Clinic, Albuquerque; Presbyterian Medical Group-Atrisco, Northside, Pediatric Urgent Care; Albuquerque Health Partners Urgent Care, Rio Rancho
Southwest	Gila Regional Medical Center, Silver City; Hidalgo Medical Services Clinic, Lordsburg; Ben Archer Health Center, Deming, Columbus, and Dona Ana; La Clinica de Familia, Sunland Park; Mescalero Apache Indian Health Hospital, Mescalero; New Mexico Mining and Technology Institute, Socorro
Southeast	Carlsbad Medical Center, Carlsbad; Lea Regional Medical Center, Hobbs; Eastern New Mexico Medical Center, Roswell; Roosevelt General Hospital Clinic, Portales

In accordance with New Mexico Administrative Code (NMAC) 7.4.3.13 Influenza is a reportable condition for the following:

- Influenza, laboratory confirmed hospitalizations only
- Influenza-associated pediatric death
- Acute illness or condition of any type involving large numbers of persons in the same geographic area (outbreaks)
- Other illnesses or condition of public health significance (novel influenza A)

For more information on reportable conditions please visit:

<http://www.nmcpr.state.nm.us/nmac/parts/title07/07.004.0003.htm>



Report published by New Mexico Department of Health (NMDOH), Epidemiology and Response Division (ERD) Infectious Disease Epidemiology Bureau (IDEB)

For questions, please call 505-827-0006. For more information on influenza go to the NMDOH web page:

<https://nmhealth.org/about/erd/ideb/isp/> Or The CDC web page: <http://www.cdc.gov/flu/index.htm>