

# New Mexico Department of Health Influenza & Respiratory Disease Report

A Summary of Influenza and RSV Surveillance

## New Mexico Influenza Geographic Spread\*

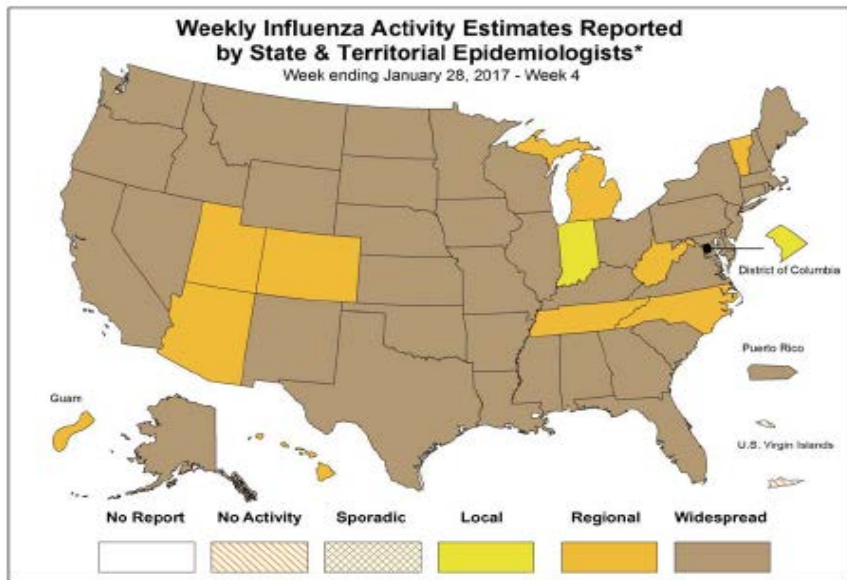
No Activity

Sporadic

Local

Regional

Widespread



\* This map indicates geographic spread & does not measure the severity of influenza activity

## Summary of Activity: Week 4 January 22nd – January 28th, 2017

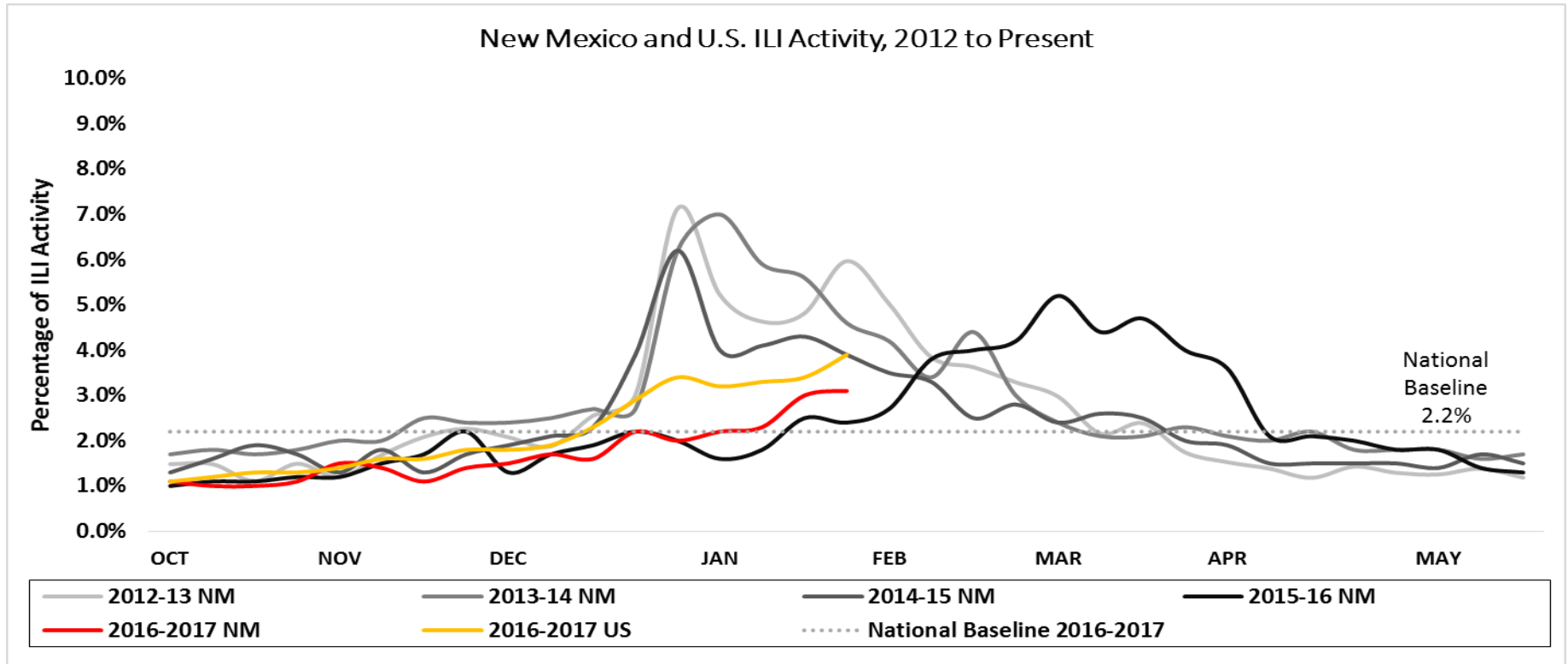
- New Mexico ILI activity is currently 3.1% which is at the national baseline
- US ILI is 3.9% which is above the national baseline of 2.2%
- Influenza activity is above the NM baseline of 2.6% in three health region
- There was PCR confirmed lab activity in all four health regions this week
- No influenza-related outbreaks has been reported this week

## Table of Contents

- Influenza-Like Illness (ILI) ..... 2
- Regional ILI ..... 3
- Laboratory Data ..... 4-5
- Hospitalization and Death Data ..... 6
- Prevention and Control ..... 7
- Appendix & Resources ..... 8

# Influenza-Like Illness (ILI) Activity

New Mexico Department of Health (NMDOH) is collaborating with 29\* ILI sentinel sites for the 2016-2017 season. Sites report weekly on the number of patients that present to their facility with influenza-like illness. That number is then divided by the total number of patients seen for any reason, resulting in percent of ILI activity. ILI is defined as fever of > 100° F and cough and sore throat in absence of known cause.

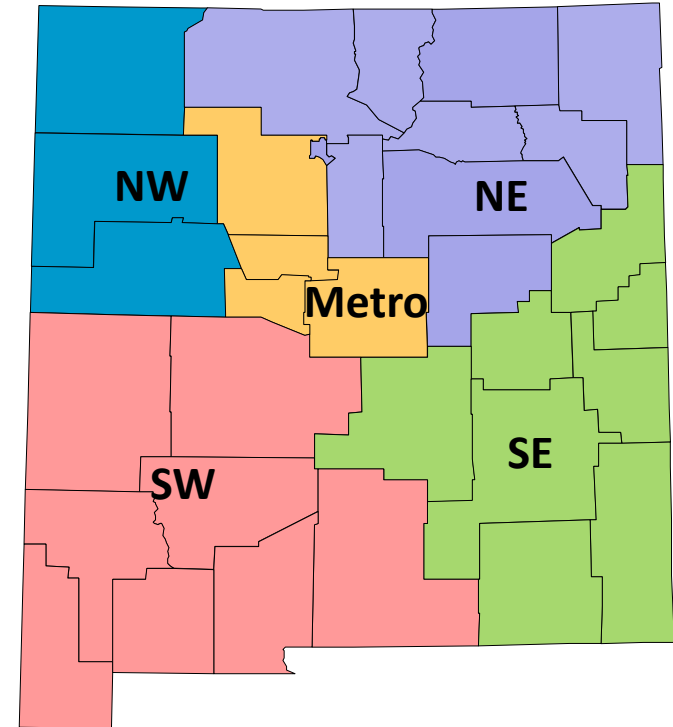
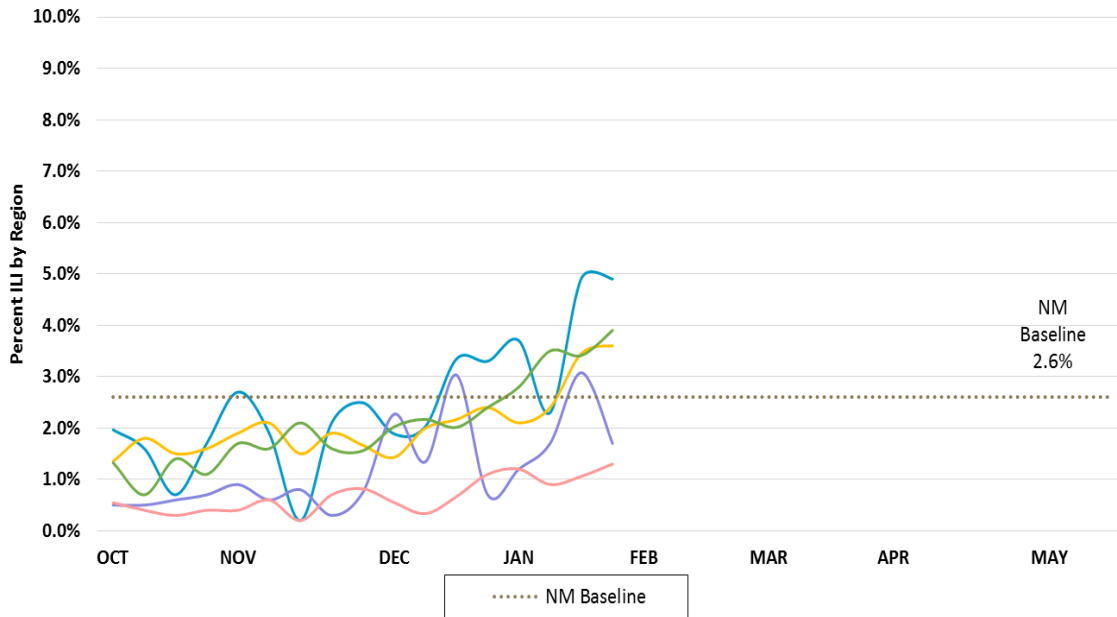


% ILI, NM Week 4 Jan 22nd – 28th, 2017 (current Week)	% ILI, NM Week 3 Jan 15 <sup>th</sup> – 21st, 2017 (previous week)	%ILI, US Week 4 Jan 22nd-28th, 2017 (current week)
3.1%	3.0 %	3.9%

\* See appendix for 29 reporting sites

# Regional ILI Activity

NM ILI Activity by Health Region, 2016-2017



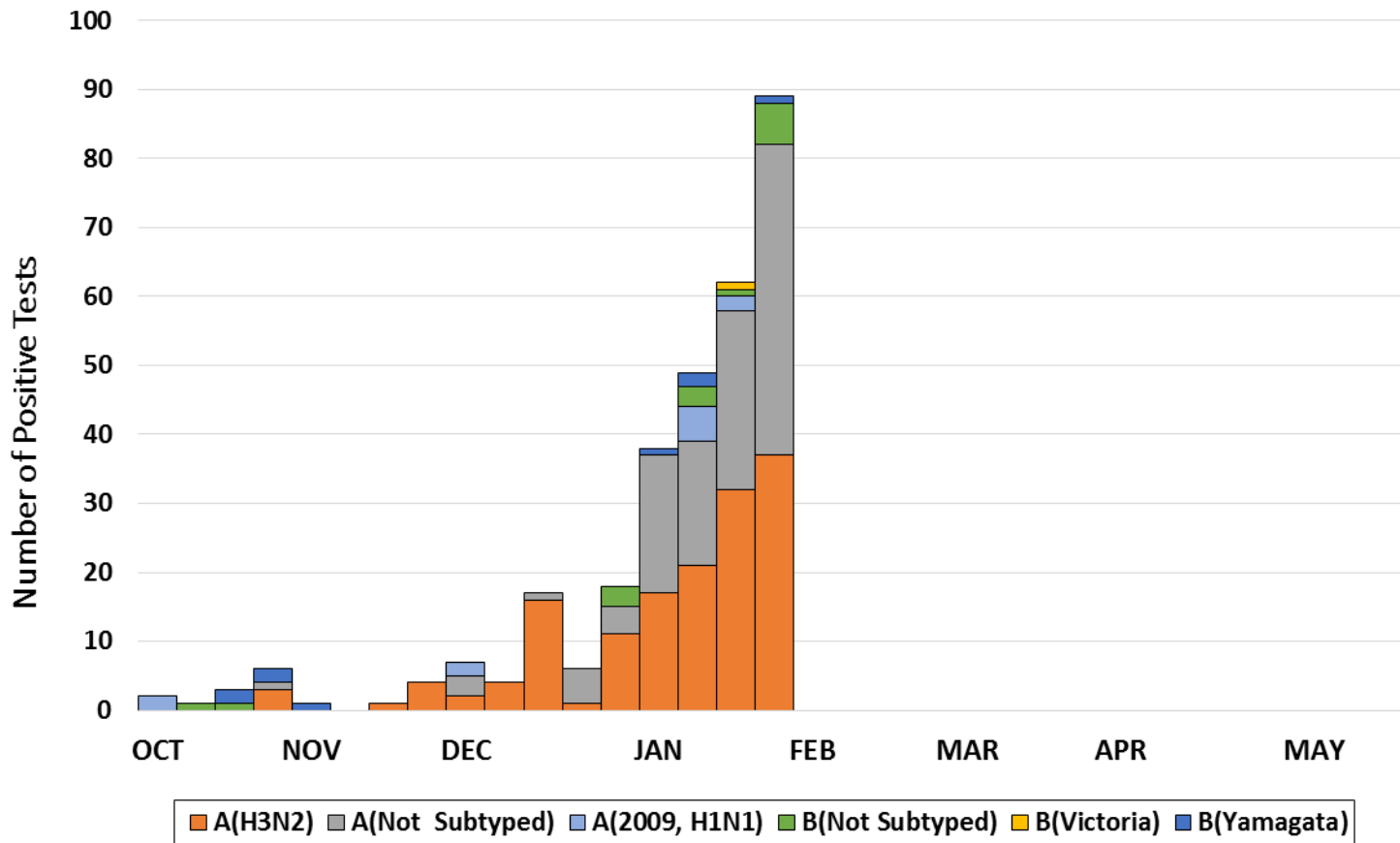
Region	This Week	Last Week	Outbreaks	+PCR testing at SLD
NW	4.9%	4.9%	No	No
NE	1.7%	1.6%	No	Yes
Metro	3.6%	3.4%	No	Yes
SW	1.3%	1.1%	No	Yes
SE	3.9%	3.4%	No	Yes

**Outbreak:** An influenza outbreak is defined as at least two cases of ILI in a specific area with at least one lab confirmed case.

**PCR Testing:** Polymerase Chain Reaction (PCR) tests can identify the presence of influenza viral RNA in respiratory specimens. PCR testing is performed at various laboratories across New Mexico.

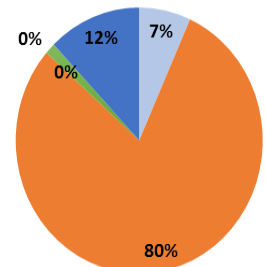
# Laboratory Data & Virologic Surveillance

PCR Positive Results among Hospital/Clinical Sites and Scientific Laboratory Division, 2016-2017

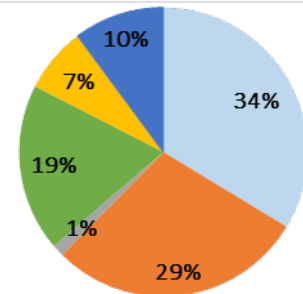


Since the start of the 2016-2017 influenza season, laboratories have reported that a total of 315 out of 5,868 respiratory specimens have tested positive for influenza by PCR. Eleven positive specimens were subtyped as A(H1N1), 149 were A(H3N2), 123 influenza A specimen was not subtyped. Fifteen tested positive as influenza B not subtyped, 1 positive specimens were identified as B(Victoria) and 9 as B(Yamagata).

NM subtyping performed at SLD

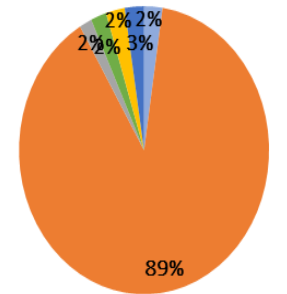


2016-2017



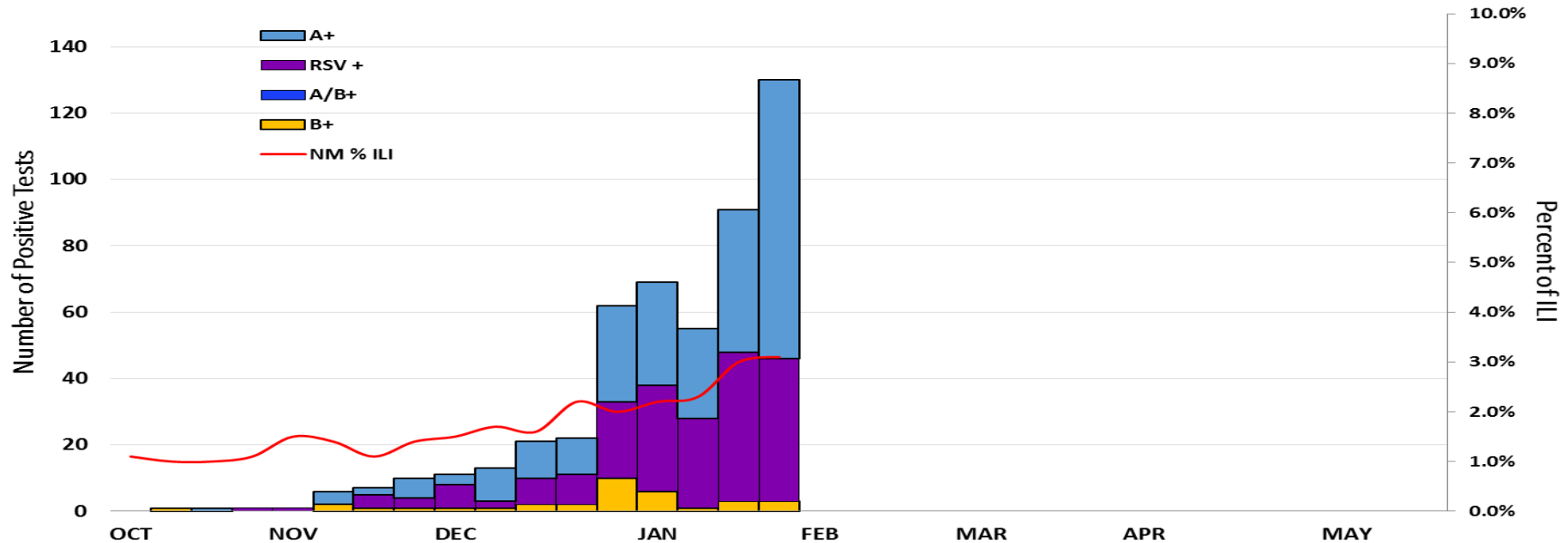
2015-2016

U.S. virus characterization performed at CDC



2016-2017

# RSV and Rapid Influenza Laboratory Data 2016-2017



## Laboratory Sites Participating in Rapid influenza Data Collection (Facility name, City)

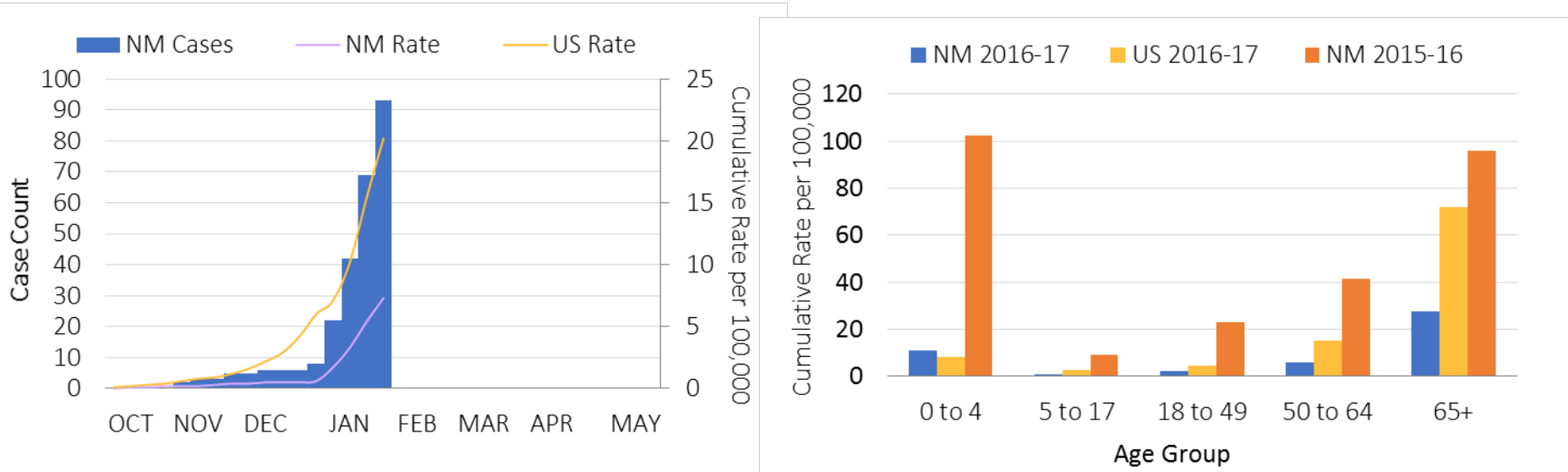
<b>NW</b>	San Juan Regional Medical Center, Farmington; and Acoma-Canoncito-Laguna Indian Health Hospital, Acoma Pueblo
<b>NE</b>	Taos-Picuris Indian Health Clinic, Taos; Pecos Valley Medical Center, Pecos; La Familia Medical Clinics, Santa Fe; Los Alamos Family Care Clinic, Los Alamos; Jicarilla Apache Indian Health Clinic, Dulce; Children's Clinic PA, Los Alamos
<b>Metro</b>	Lovelace Downtown Medical Center, Albuquerque; University of New Mexico Student Health Clinic, Albuquerque; Presbyterian Medical Group-Atrisco, Northside, Pediatric Urgent Care; Albuquerque Health Partners Urgent Care, Rio Rancho
<b>SW</b>	Gila Regional Medical Center, Silver City; Hidalgo Medical Services Clinic, Lordsburg; Ben Archer Health Center, Deming, Columbus, and Dona Ana; La Clinica de Familia, Sunland Park; Mescalero Apache Indian Health Hospital, Mescalero; New Mexico Mining and Technology Institute, Socorro
<b>SE</b>	Carlsbad Medical Center, Carlsbad; Lea Regional Medical Center, Hobbs; Eastern New Mexico Medical Center, Roswell; Roosevelt General Hospital Clinic, Portales

## Laboratory Sites Participating in RSV Data Collection (Facility name, City)

	San Juan Regional Medical Center, Farmington and Acoma-Canoncito-Laguna Indian Health Hospital, Acoma, Gallup Indian Medical Center, Gallup; Zuni Hospital, Zuni; Crownpoint IHS, Gallup;
	Los Alamos Medical Center, Los Alamos, Dulce Health Center, Dulce; Christus St. Vincent. Santa Fe; Alta Vista Regional Hospital, Las Vegas; Miners' Colfax Medical Center, Raton
	Quest Diagnostic Laboratory, Albuquerque
	Gerald Champion, Alamogordo
	Artesia General Hospital, Artesia; Carlsbad Medical Center, Carlsbad; Lea Regional Medical Center, Hobbs; Eastern New Mexico Medical Center, Roswell

\* Data is not representative of all facilities in New Mexico

# Influenza Hospitalizations, NM & US, 2016-2017



# Influenza and Pneumonia Deaths, NM, 2014-2016

Season	Year to date (YTD) P & I Deaths	Pneumonia Deaths	Adult Flu Deaths	Pediatric Flu Deaths	Total P & I Deaths
2016-2017	9	6	3	0	9*
2015-2016	190	159	30	1	190
2014-2015	185	152	32	1	185

**Pneumonia death:** Is defined as have a cause of death that related to pneumonia & influenza (P & I) not including: aspiration pneumonia, pneumonitis, or pneumococcal meningitis.

**Influenza death:** Is defined as have a cause of death that related to pneumonia & influenza (P & I) not including: parainfluenzae or *Haemophilus influenzae*.

\*There are significant reporting delays and counts represent cases reported to date by the NMDOH BVRHS or OMI

# Vaccination Information

Still Need to Get Your Flu Shot?

HealthMap Vaccine Finder:

<http://vaccine.healthmap.org/>

To use HealthMap Vaccine Finder you'll need internet access and the zip code in which you wish to get vaccinated.

Or

Contact your local public health office:

<https://nmhealth.org/location/public/>

## Antiviral Information and Data

Persons at higher risk for influenza complication recommended for antiviral treatment include:

- Children aged younger than 2 years & adults aged 65 years and older
- Persons with chronic medical conditions
- Persons with immunosuppression, including that caused by medications or by HIV infection
- Women who are pregnant or postpartum (within 2 weeks after delivery)
- Persons aged younger than 19 years who are receiving long-term aspirin therapy
- American Indians/Alaska Natives
- Persons who are morbidly obese (i.e., BMI is 40 or greater)
- Residents of nursing homes and other chronic-care facilities

# Appendix

\*Geographic spread is based on CDCs activity estimates definitions. For more information visit: <http://www.cdc.gov/flu/weekly/overview.htm>

Health Region	Participating Sentinel Sites (Facility name, City)
Northwest	San Juan Regional Medical Center, Farmington and Acoma-Canoncito-Laguna Indian Health Hospital, Acoma
Northeast	Raton Family Practice Associates, Raton; Taos-Picuris Indian Health Clinic, Taos; Pecos Valley Medical Center, Pecos; La Familia Medical Clinics, Santa Fe; Los Alamos Family Care Clinic, Los Alamos; Jicarilla Apache Indian Health Clinic, Dulce; Children's Clinic PA, Los Alamos; Miner's Colfax Medical Center, Raton
Metro	Lovelace Downtown Medical Center, Albuquerque; University of New Mexico Student Health Clinic, Albuquerque; Presbyterian Medical Group-Atrisco, Northside, Pediatric Urgent Care; Albuquerque Health Partners Urgent Care, Rio Rancho
Southwest	Gila Regional Medical Center, Silver City; Hidalgo Medical Services Clinic, Lordsburg; Ben Archer Health Center, Deming, Columbus, and Dona Ana; La Clinica de Familia, Sunland Park; Mescalero Apache Indian Health Hospital, Mescalero; New Mexico Mining and Technology Institute, Socorro
Southeast	Carlsbad Medical Center, Carlsbad; Lea Regional Medical Center, Hobbs; Eastern New Mexico Medical Center, Roswell; Roosevelt General Hospital Clinic, Portales

In accordance with New Mexico Administrative Code (NMAC) 7.4.3.13 Influenza is a reportable condition for the following:

- Influenza, laboratory confirmed hospitalizations only
- Influenza-associated pediatric death
- Acute illness or condition of any type involving large numbers of persons in the same geographic area (outbreaks)
- Other illnesses or condition of public health significance (novel influenza A)

For more information on reportable conditions please visit:

<http://www.nmcpr.state.nm.us/nmac/parts/title07/07.004.0003.htm>



Report published by New Mexico Department of Health (NMDOH), Epidemiology and Response Division (ERD) Infectious Disease Epidemiology Bureau (IDEB)

For questions, please call 505-827-0006. For more information on influenza go to the NMDOH web page:

<https://nmhealth.org/about/erd/ideb/isp/> Or The CDC web page: <http://www.cdc.gov/flu/index.htm>