



Influenza Surveillance Report

April 7, 2010

Outpatient Influenza-Like Illness (ILI) Surveillance

- For the week ending 4/3/10, visits to doctors for influenza-like illness (ILI) in New Mexico decreased slightly from 2.6% to 2.2% (Figure 1).
- The Northwest and Northeast regions experienced a minimal increase in the percentage of outpatient visits for ILI while all other regions experienced decreases (Figure 2). The percentages of outpatient visits for ILI in New Mexico regions were: 0.6% in Northeast, 2.7% in Northwest, 2.7% in Central, 0.9% in Southwest and 4.6% in Southeast.

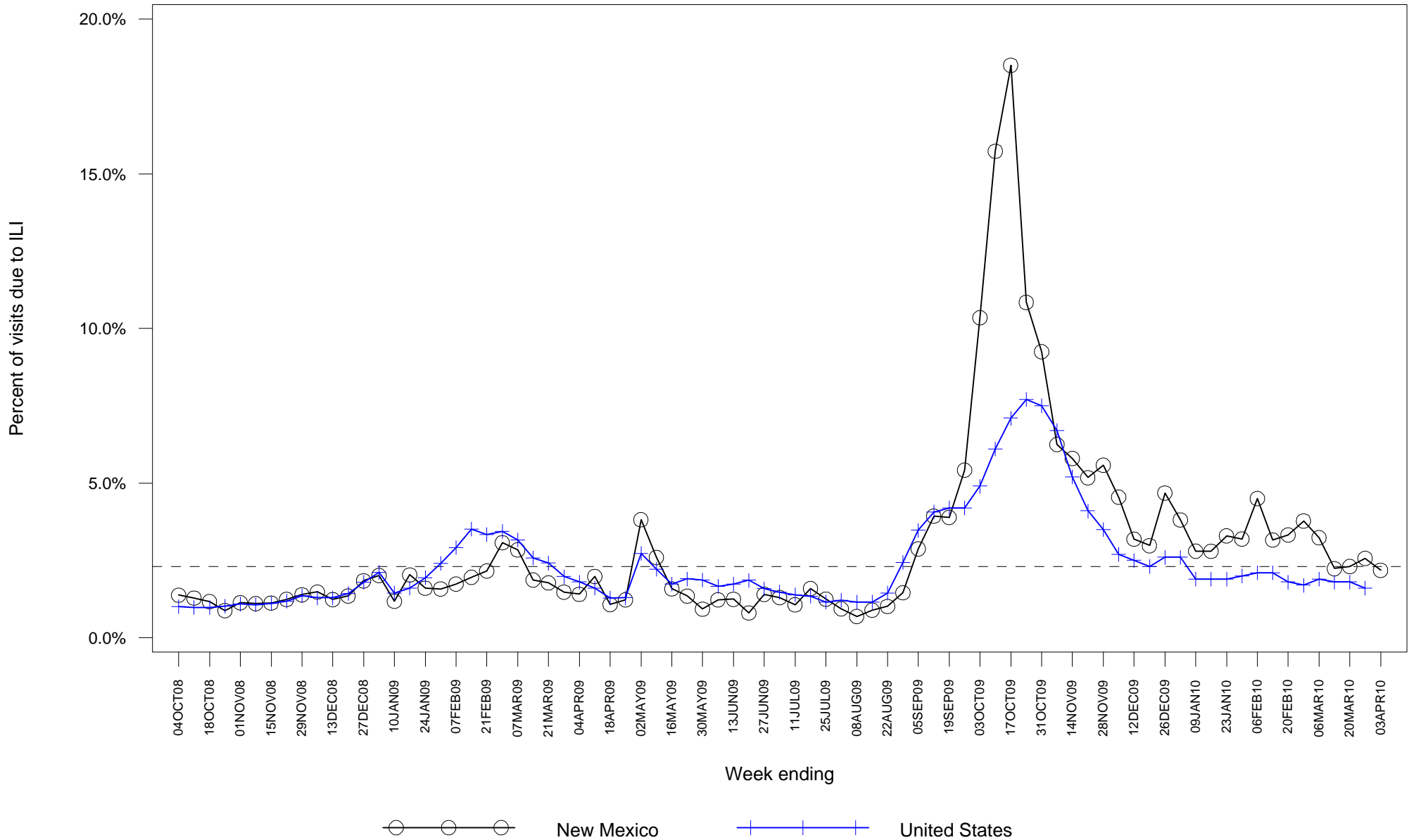
Laboratory-confirmed Influenza Hospitalization Surveillance

- Starting 10/12/09 the case definition for laboratory-confirmed influenza hospitalizations was expanded to include patients with positive rapid influenza and influenza fluorescent antibody tests. Previously the case definition only considered positive RT-PCR and viral culture results as confirmatory. This change was made to more accurately represent the burden of influenza-related hospitalizations in New Mexico.
- As of 4/7/10, there have been 1047 hospitalizations related to laboratory-confirmed influenza infection in New Mexico, an increase of 8 in the seasonal total from last week. Figure 3 shows number of hospitalizations by week of admission. Table 1 summarizes hospitalizations by county of residence.

Laboratory-confirmed Influenza Death Surveillance

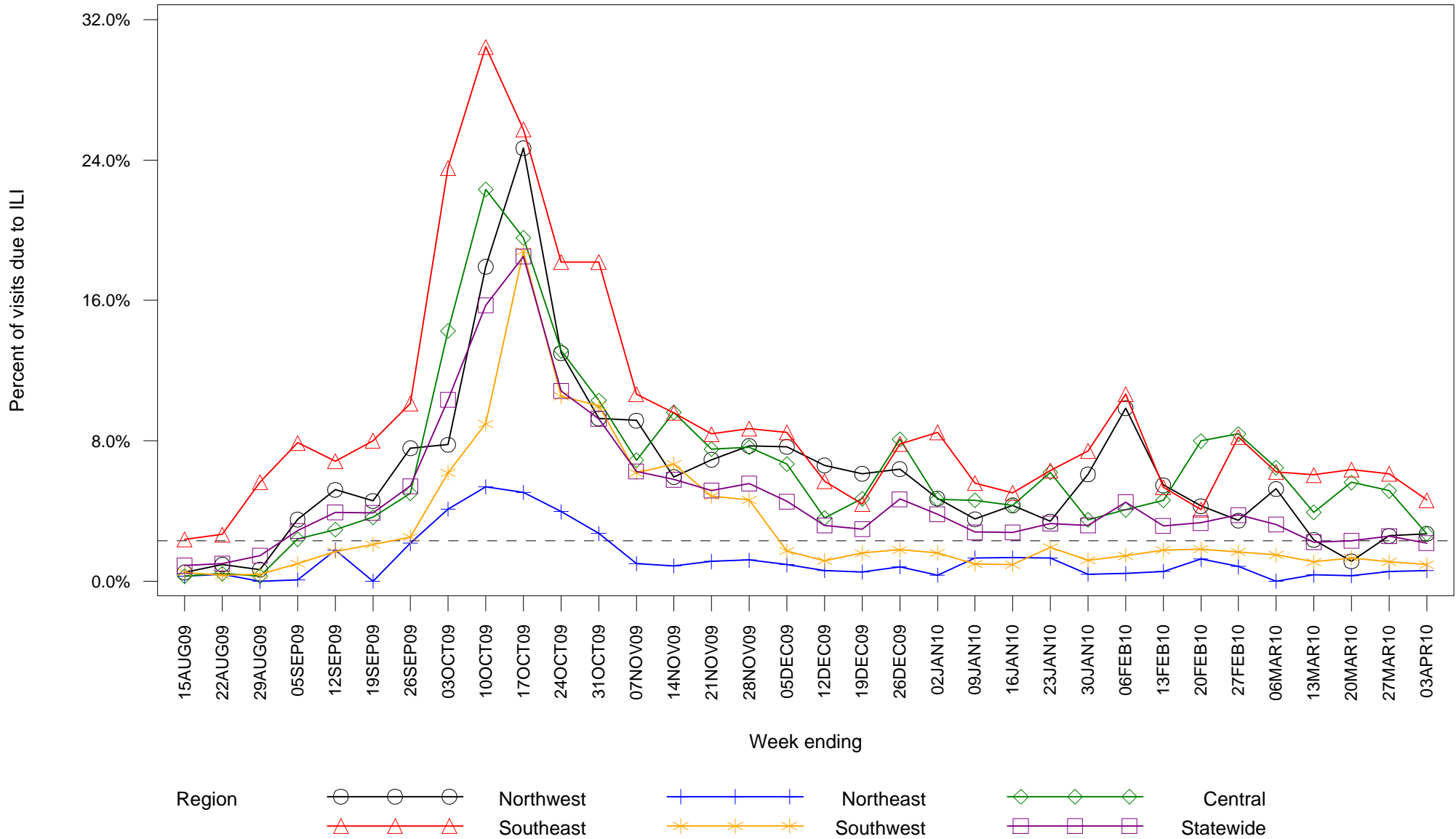
- As of 4/7/10, there have been 56 deaths related to laboratory-confirmed influenza infection in New Mexico. There was one new death reported in the past week which occurred in week ending 3/27/10: a 66 year-old male with high-risk medical conditions from Lea County. Table 2 summarizes deaths by county of residence.

Figure 1: Percent of sentinel provider outpatient visits due to influenza-like illness (ILI) New Mexico and United States



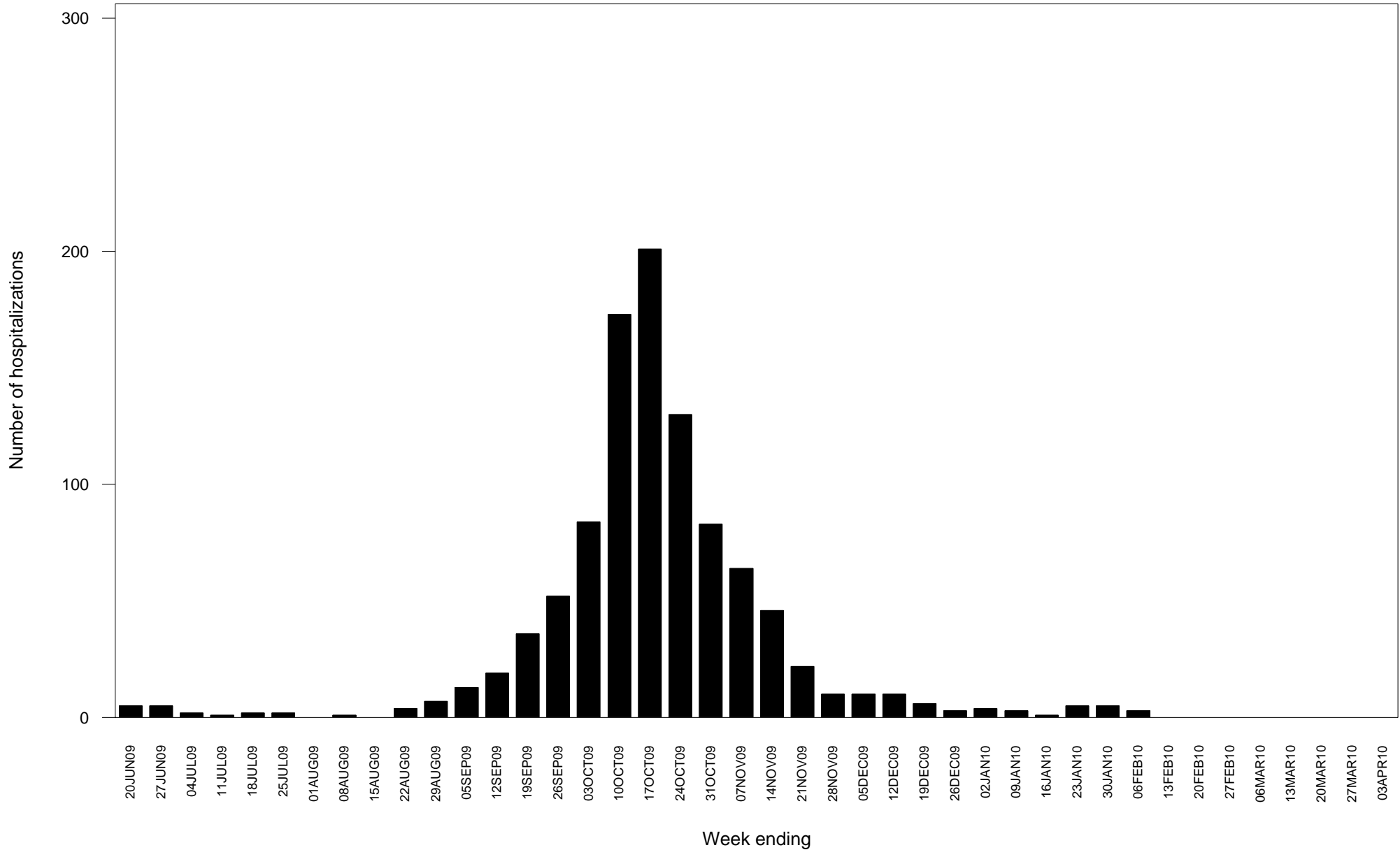
Dashed line indicates national baseline value of 2.3%. Reporting of US data is delayed a week.

Figure 2: Percent of sentinel provider outpatient visits due to influenza-like illness (ILI) New Mexico



Dashed line indicates national baseline value of 2.3%. The Southeast region consistently reports ILI visit percentages that are higher than other regions so differences between regions should be interpreted with caution.

**Figure 3: Laboratory-confirmed influenza hospitalizations by admission date
New Mexico**



Report date substituted for admission date for 2 hospitalizations for which admission date has not yet been determined.

**Table 1: Cumulative laboratory-confirmed influenza hospitalizations by county of residence
New Mexico**

County	Number
Bernalillo County	253
Catron County	3
Chaves County	19
Cibola County	16
Colfax County	22
Curry County	57
Dona Ana County	127
Eddy County	30
Grant County	20
Guadalupe County	1
Hidalgo County	3
Lea County	41
Lincoln County	5
Los Alamos County	4
Luna County	13
McKinley County	83
Mora County	2
Otero County	34
Quay County	7
Rio Arriba County	24
Roosevelt County	9
San Juan County	71
San Miguel County	9
Sandoval County	41

(Continued)

**Table 1: Cumulative laboratory-confirmed influenza hospitalizations by county of residence
New Mexico**

County	Number
Santa Fe County	61
Sierra County	13
Socorro County	21
Taos County	24
Torrance County	2
Valencia County	32
Total	1047

**Table 2: Cumulative laboratory-confirmed influenza deaths by county of residence
New Mexico**

County	Number
Bernalillo County	19
Chaves County	3
Colfax County	1
Curry County	1
Dona Ana County	4
Eddy County	1
Lea County	3
Los Alamos County	1
Luna County	1
McKinley County	2
Otero County	1
Quay County	1
Rio Arriba County	1
Roosevelt County	1
San Juan County	4
San Miguel County	1
Sandoval County	2
Santa Fe County	5
Sierra County	1
Socorro County	1
Valencia County	2
Total	56