



Influenza Surveillance Report

December 9, 2009

Outpatient Influenza-Like Illness (ILI) Surveillance

- For the week ending 12/5/09, visits to doctors for influenza-like illness (ILI) in New Mexico decreased from 5.4% to 4.6% (Figure 1). The ILI visit percentage remains higher than what is expected during this time of year for both New Mexico and the United States.
- The Central region experienced a slight increase in the percentage of outpatient visits for ILI while all other regions saw decreases or remained the same (Figure 2). The percentages of outpatient visits for ILI in New Mexico regions were: 0.9% in Northeast, 7.7% in Northwest, 6.7% in Central, 1.7% in Southwest, and 8.5% in Southeast.

Laboratory-confirmed Influenza Hospitalization Surveillance

- Starting 10/12/09 the case definition for laboratory-confirmed influenza hospitalizations was expanded to include patients with positive rapid influenza and influenza fluorescent antibody tests. Previously the case definition only considered positive RT-PCR and viral culture results as confirmatory. This change was made to more accurately represent the burden of influenza-related hospitalizations in New Mexico.
- As of 12/9/09, there have been 955 hospitalizations related to laboratory-confirmed influenza infection in New Mexico, an increase of 7 from last week. The number of hospitalizations occurring during the week ending 12/5/09 rose slightly compared to the previous week (Figure 3). Table 1 summarizes hospitalizations by county of residence.

Laboratory-confirmed Influenza Death Surveillance

- As of 12/9/09, there have been 43 deaths related to laboratory-confirmed influenza infection in New Mexico. One new death was reported this week: a 50 year-old male from San Juan County without chronic medical conditions. Table 2 summarizes deaths by county of residence.



Weekly Surveillance Highlight

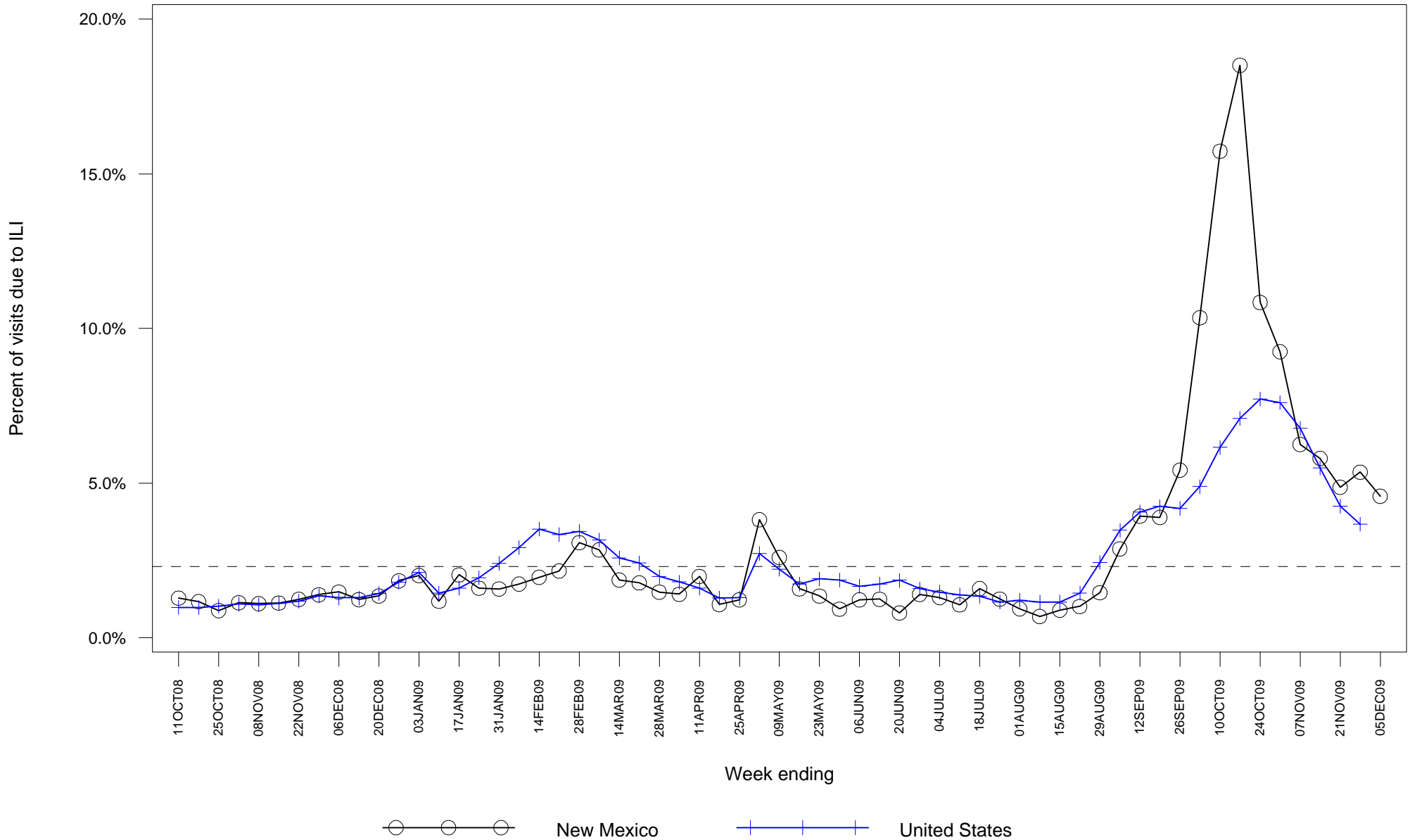
**Laboratory confirmed influenza-related deaths in New Mexico
April 15-December 9, 2009**

There have been 43 laboratory confirmed influenza-related deaths in New Mexico from April 15-December 9, 2009. Of these deaths, 67% have been among those at high risk for complications due to influenza based on CDC defined categories.

High risk factor/underlying condition	Number of deaths	Percent of total deaths
Age <2 yrs	2	5%
Age ≥65 yrs	6	14%
Asthma and other chronic lung disease	13	30%
Diabetes	11	26%
Chronic cardiovascular disease	9	21%
Neurologic disease	7	16%
Liver disorder	6	14%
Cancer in past 12 months	3	7%
Renal disease	2	5%
Immunosuppressed	1	2%
Pregnancy	0	0%
Total with high risk factors/underlying conditions	29	67%*

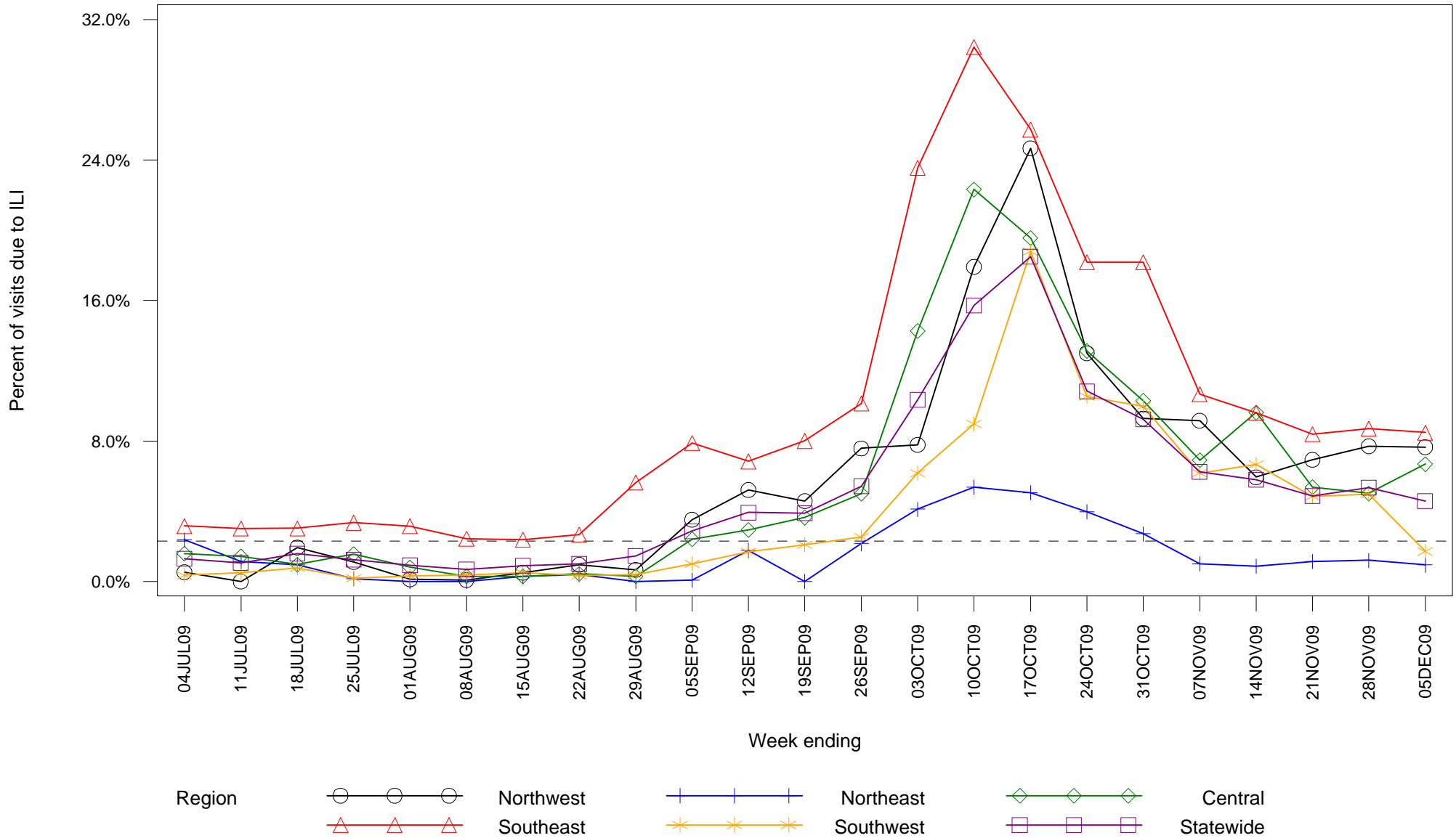
*Percents for specific conditions do not sum to total percent since individuals may be counted in more than one high-risk category.

**Figure 1: Percent of sentinel provider outpatient visits due to influenza-like illness (ILI)
New Mexico and United States**



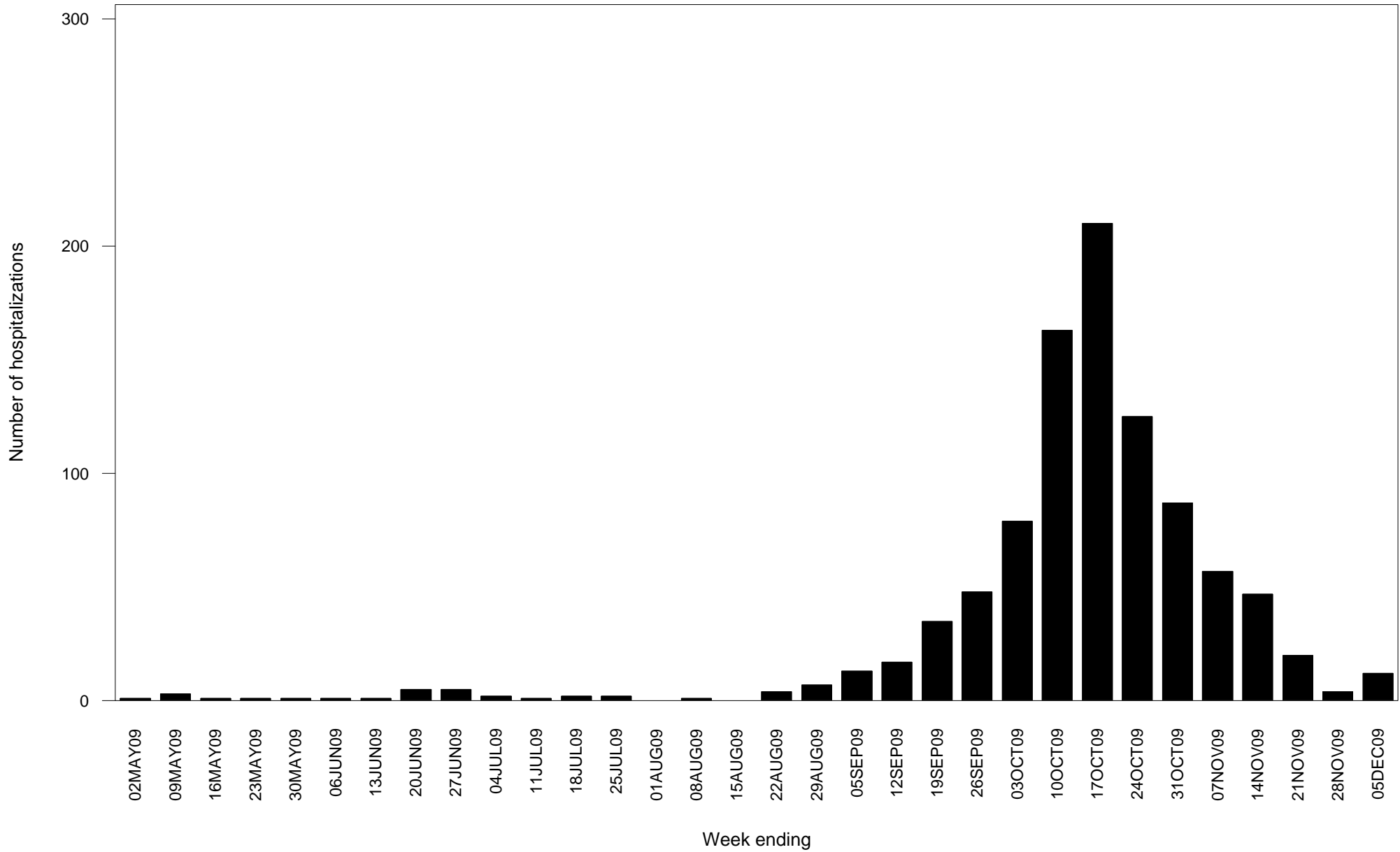
Dashed line indicates national baseline value of 2.3%. Reporting of US data is delayed a week.

Figure 2: Percent of sentinel provider outpatient visits due to influenza-like illness (ILI) New Mexico



Dashed line indicates national baseline value of 2.3%. The Southeast region consistently reports ILI visit percentages that are higher than other regions so differences between regions should be interpreted with caution.

**Figure 3: Laboratory-confirmed influenza hospitalizations by admission date
New Mexico**



Report date substituted for admission date for 61 hospitalizations for which admission date has not yet been determined.

**Table 1: Cumulative laboratory-confirmed influenza hospitalizations by county of residence
New Mexico**

County	Number
Bernalillo County	239
Catron County	2
Chaves County	15
Cibola County	12
Colfax County	22
Curry County	57
Dona Ana County	117
Eddy County	28
Grant County	14
Guadalupe County	1
Lea County	28
Lincoln County	6
Los Alamos County	4
Luna County	13
McKinley County	68
Mora County	1
Otero County	28
Quay County	6
Rio Arriba County	21
Roosevelt County	9
San Juan County	59
San Miguel County	9
Sandoval County	41
Santa Fe County	45

(Continued)

**Table 1: Cumulative laboratory-confirmed influenza hospitalizations by county of residence
New Mexico**

County	Number
Sierra County	10
Socorro County	15
Taos County	22
Torrance County	2
Union County	1
Unknown	29
Valencia County	31
Total	955

**Table 2: Cumulative laboratory-confirmed influenza deaths by county of residence
New Mexico**

County	Number
Bernalillo County	13
Chaves County	3
Colfax County	1
Curry County	1
Dona Ana County	3
Eddy County	1
Lea County	1
Los Alamos County	1
Luna County	1
McKinley County	2
Quay County	1
Roosevelt County	1
San Juan County	4
Sandoval County	2
Santa Fe County	3
Sierra County	1
Socorro County	1
Valencia County	3
Total	43