



Influenza Surveillance Report

December 2, 2009

Outpatient Influenza-Like Illness (ILI) Surveillance

- For the week ending 11/28/09, visits to doctors for influenza-like illness (ILI) in New Mexico rose slightly from 4.9% to 5.4% (Figure 1). The ILI visit percentage remains higher than what is expected during this time of year for both New Mexico and the United States.
- The Central region experienced a slight decrease in the percentage of outpatient visits for ILI while all other regions saw slight increases (Figure 2). The percentages of outpatient visits for ILI in New Mexico regions were 1.2% in Northeast, 7.7% in Northwest, 5.0% in Central, 5.0% in Southwest, and 8.7% in Southeast.

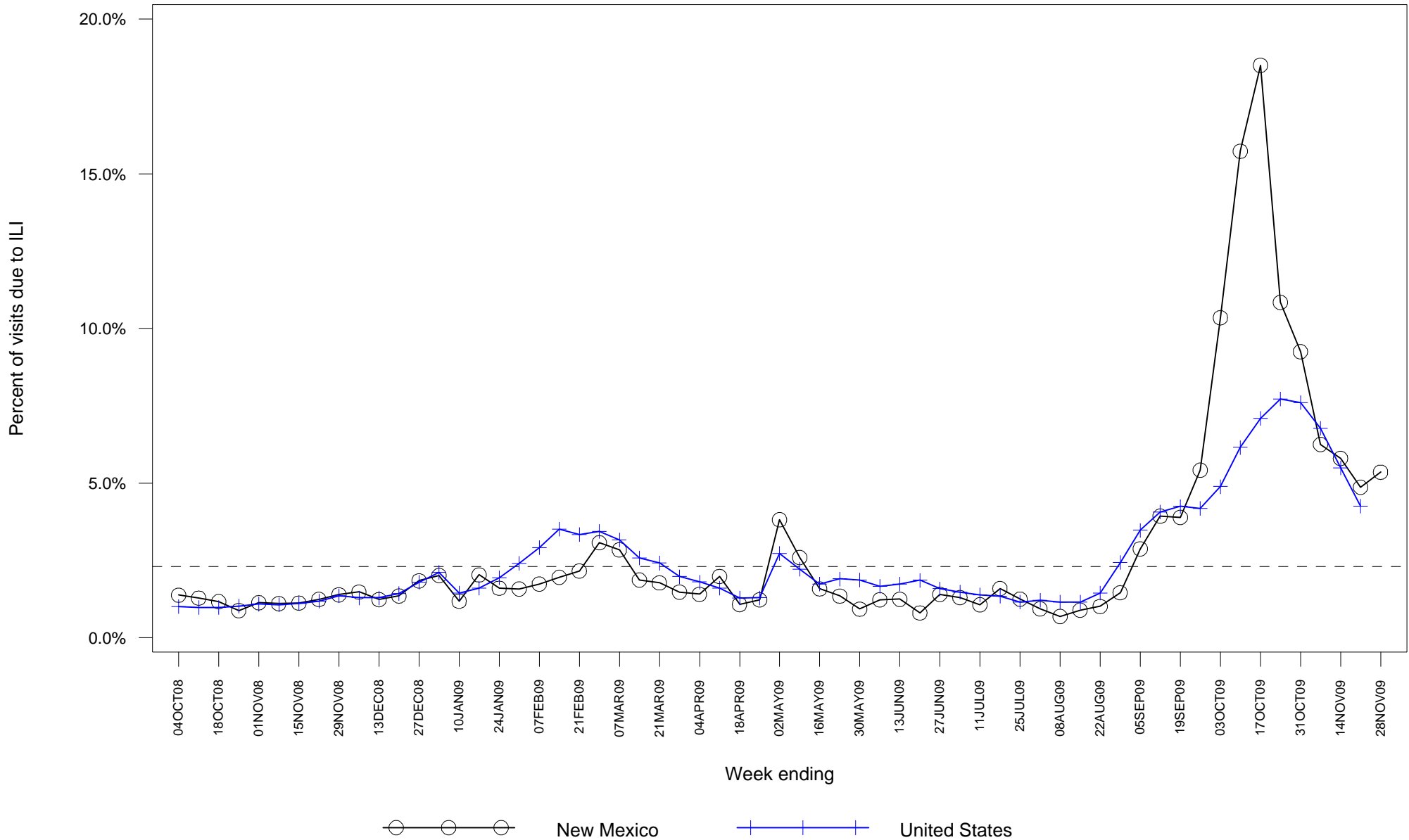
Laboratory-confirmed Influenza Hospitalization Surveillance

- Starting 10/12/09 the case definition for laboratory-confirmed influenza hospitalizations was expanded to include patients with positive rapid influenza and influenza fluorescent antibody tests. Previously the case definition only considered positive RT-PCR and viral culture results as confirmatory. This change was made to more accurately represent the burden of influenza-related hospitalizations in New Mexico.
- As of 12/2/09, there have been 948 hospitalizations related to laboratory-confirmed influenza infection in New Mexico, an increase of 2 from last week. The number of hospitalizations occurring during the week ending 11/28/09 declined compared to the previous week (Figure 3). Table 1 summarizes hospitalizations by county of residence.

Laboratory-confirmed Influenza Death Surveillance

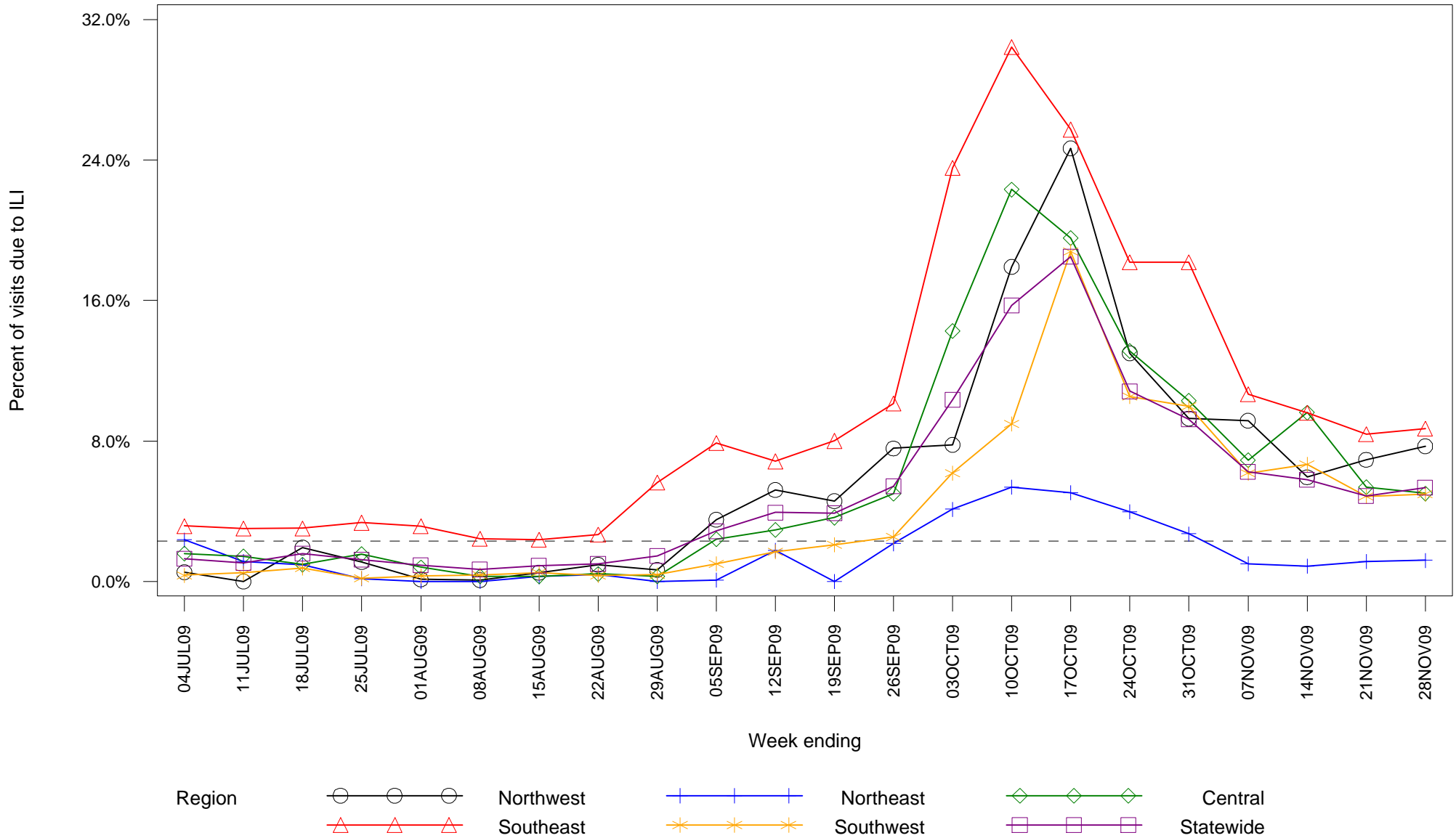
- As of 12/2/09, there have been 42 deaths related to laboratory-confirmed influenza infection in New Mexico. Two new deaths were reported this week: a 78 year-old female from Bernalillo County with chronic medical conditions and a 59 year-old female from Luna County whose medical history has not yet been determined. Table 2 summarizes deaths by county of residence.

**Figure 1: Percent of sentinel provider outpatient visits due to influenza-like illness (ILI)
New Mexico and United States**



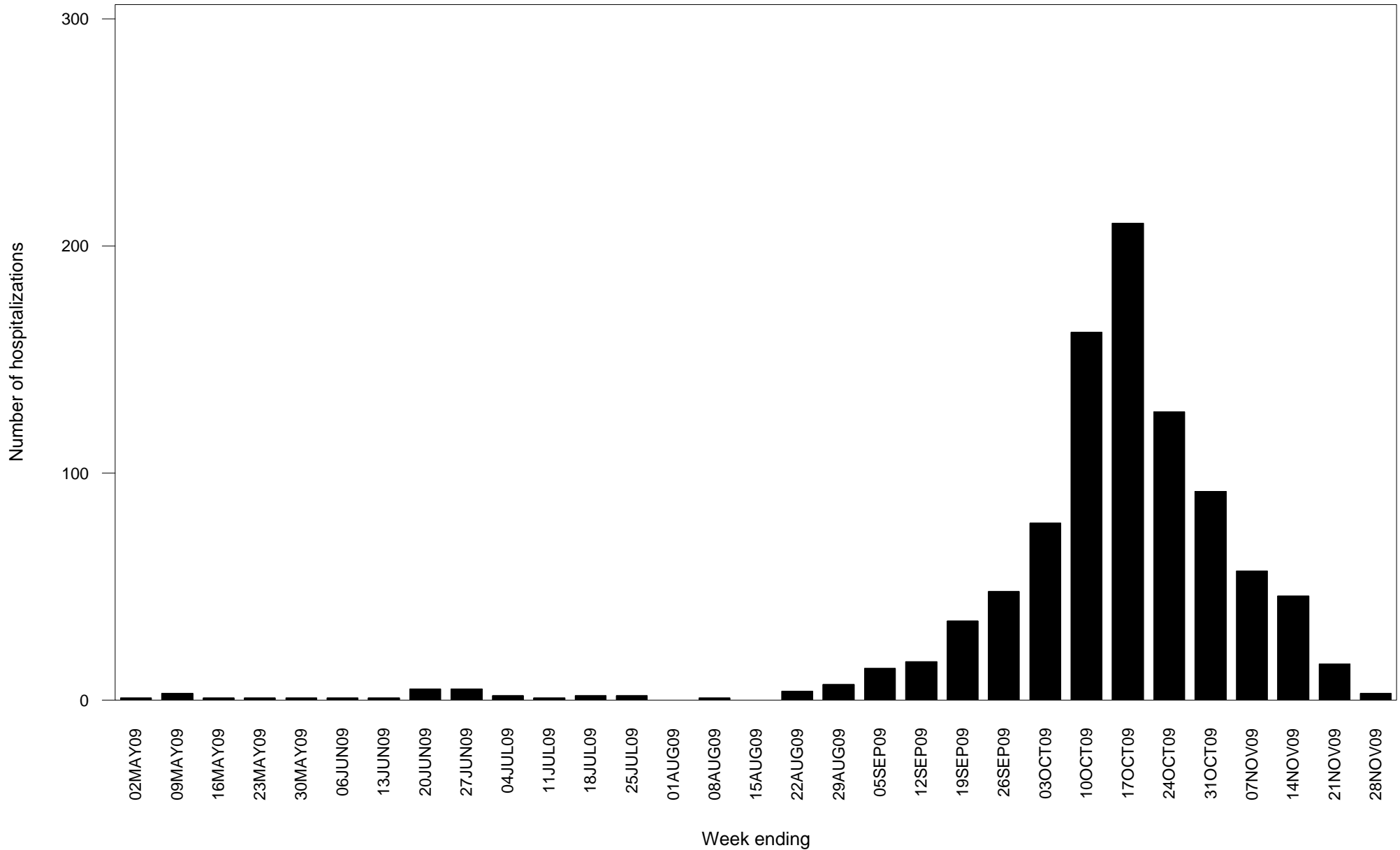
Dashed line indicates national baseline value of 2.3%. Reporting of US data is delayed a week.

Figure 2: Percent of sentinel provider outpatient visits due to influenza-like illness (ILI) New Mexico



Dashed line indicates national baseline value of 2.3%. The Southeast region consistently reports ILI visit percentages that are higher than other regions so differences between regions should be interpreted with caution.

**Figure 3: Laboratory-confirmed influenza hospitalizations by admission date
New Mexico**



Report date substituted for admission date for 71 hospitalizations for which admission date has not yet been determined.

**Table 1: Cumulative laboratory-confirmed influenza hospitalizations by county of residence
New Mexico**

County	Number
Bernalillo County	236
Catron County	2
Chaves County	15
Cibola County	12
Colfax County	22
Curry County	57
Dona Ana County	115
Eddy County	28
Grant County	14
Guadalupe County	1
Lea County	27
Lincoln County	6
Los Alamos County	4
Luna County	13
McKinley County	69
Mora County	1
Otero County	27
Quay County	6
Rio Arriba County	20
Roosevelt County	9
San Juan County	57
San Miguel County	7
Sandoval County	41
Santa Fe County	44

(Continued)

**Table 1: Cumulative laboratory-confirmed influenza hospitalizations by county of residence
New Mexico**

County	Number
Sierra County	10
Socorro County	15
Taos County	22
Torrance County	2
Union County	1
Unknown	33
Valencia County	32
Total	948

**Table 2: Cumulative laboratory-confirmed influenza deaths by county of residence
New Mexico**

County	Number
Bernalillo County	13
Chaves County	3
Colfax County	1
Curry County	1
Dona Ana County	3
Eddy County	1
Lea County	1
Los Alamos County	1
Luna County	1
McKinley County	2
Quay County	1
Roosevelt County	1
San Juan County	3
Sandoval County	2
Santa Fe County	3
Sierra County	1
Socorro County	1
Valencia County	3
Total	42