



## Influenza Surveillance Report

September 30, 2009

### **Outpatient Influenza-Like Illness (ILI) Surveillance**

- For the week ending 9/26/09, visits to doctors for influenza-like illness (ILI) in New Mexico rose from 3.9% to 5.1% (Figure 1). The ILI visit percentage is significantly higher than what is expected during this time of year for both New Mexico and the United States.
- For the week ending 9/26/09, the percentage of outpatient visits for ILI in New Mexico regions ranged from 2.2% to 10.1% (Figure 2). ILI visits have increased dramatically in all regions over the past several weeks.

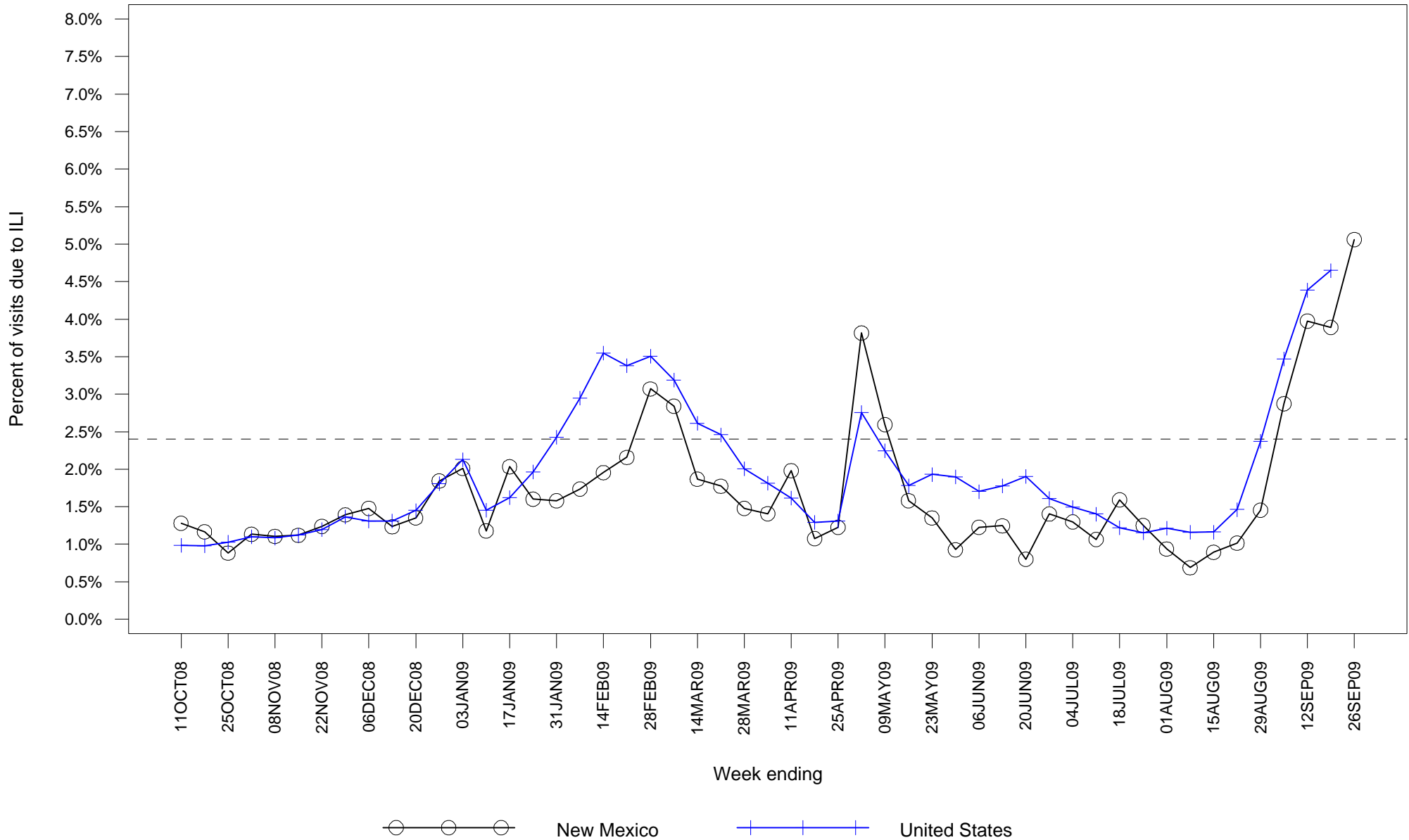
### **Laboratory-confirmed Influenza Hospitalization Surveillance**

- As of 9/30/09, there have been 85 hospitalizations related to lab-confirmed H1N1 influenza infection in New Mexico. Table 1 summarizes hospitalizations by county of residence. County of residence for 4 patients has yet to be determined.

### **Laboratory-confirmed Influenza Death Surveillance**

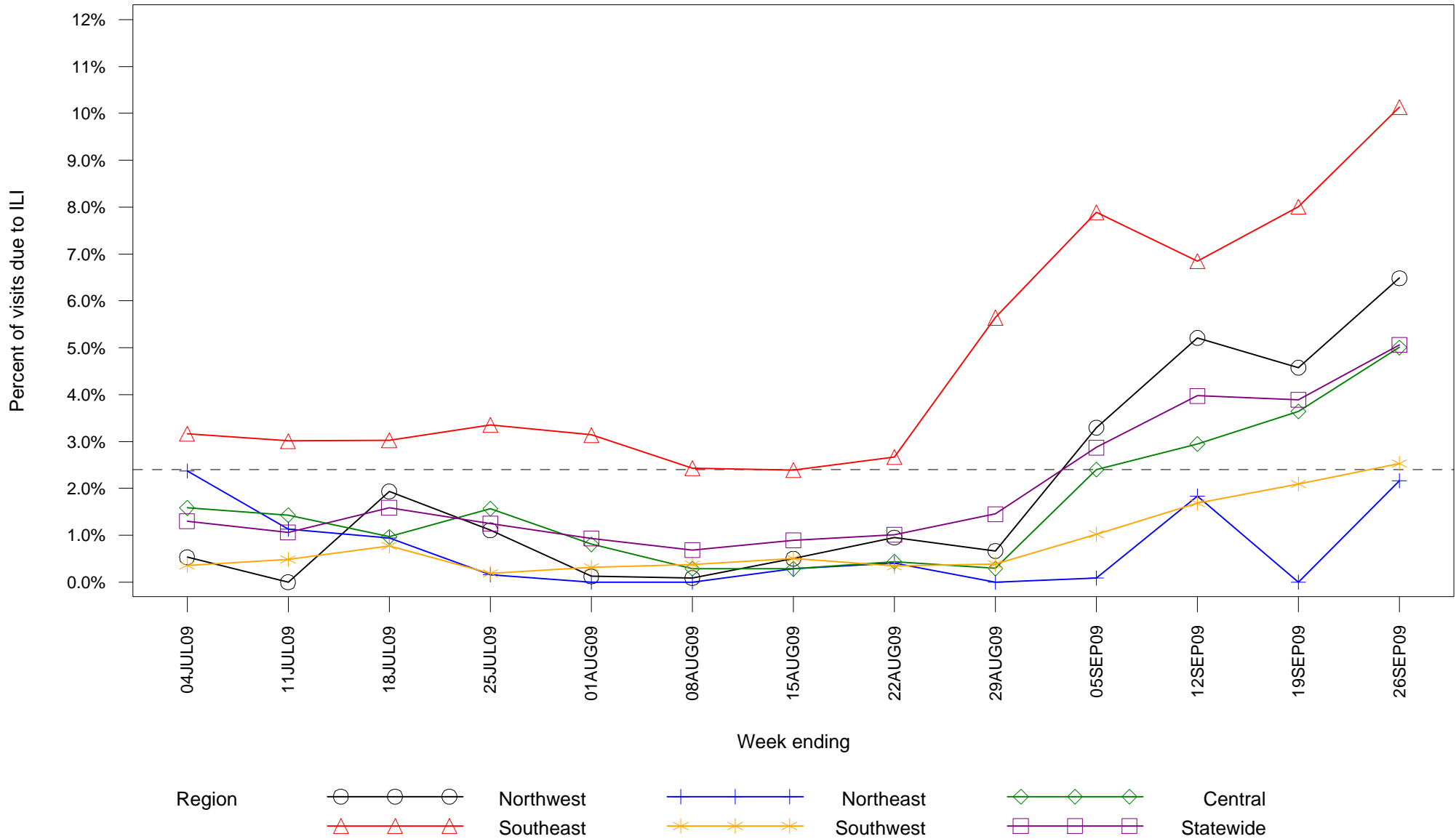
- As of 9/30/09, there have been 5 deaths related to lab-confirmed H1N1 influenza infection in New Mexico. The deaths are as follows: a 45-year-old female from Sierra County with end stage liver disease, a 52-year-old female from Bernalillo County with chronic pulmonary disease, a 48-year-old female from McKinley County with asthma and diabetes, a 57-year-old male from Bernalillo County with chronic pulmonary disease and a 21-year-old female from Los Alamos County without chronic medical conditions. Table 2 summarizes deaths by county of residence.

**Figure 1: Percent of sentinel provider outpatient visits due to influenza-like illness (ILI)  
New Mexico and United States**



Dashed line indicates national baseline value of 2.4%. Reporting of US data is delayed a week.

# Figure 2: Percent of sentinel provider outpatient visits due to influenza-like illness (ILI) New Mexico



Dashed line indicates national baseline value of 2.4%. The Southeast region consistently reports ILI visit percentages that are higher than other regions so differences between regions should be interpreted with caution.

**Table 1: Cumulative laboratory-confirmed influenza hospitalizations by county of residence  
New Mexico**

<b>County</b>	<b>Number</b>
<b>Bernalillo County</b>	11
<b>Chaves County</b>	3
<b>Cibola County</b>	3
<b>Dona Ana County</b>	7
<b>Eddy County</b>	5
<b>Lea County</b>	2
<b>Lincoln County</b>	2
<b>Los Alamos County</b>	1
<b>McKinley County</b>	12
<b>Otero County</b>	5
<b>Rio Arriba County</b>	3
<b>Roosevelt County</b>	2
<b>San Juan County</b>	5
<b>Sandoval County</b>	3
<b>Santa Fe County</b>	5
<b>Sierra County</b>	4
<b>Socorro County</b>	1
<b>Taos County</b>	6
<b>Unknown</b>	4
<b>Valencia County</b>	1
<b>Total</b>	85

**Table 2: Cumulative lab-confirmed influenza deaths by county of residence  
New Mexico**

<b>County</b>	<b>Number</b>
<b>Bernalillo County</b>	2
<b>Los Alamos County</b>	1
<b>McKinley County</b>	1
<b>Sierra County</b>	1
<b>Total</b>	5